

Dilatasyon Kompansatörleri, Limit Rotlu (Flanşlı, PN 16) Dilatation Expansion Joints, With Limiting Rod (Flanged, PN 16)



T-2420 T-2440
T-2460 T-2480

Genel Özellikler / General Specifications

Çalışma Sıcaklık Aralığı / Working Temperature :

-80 ... +420°C (16 Bar) Genleşme Miktarı / Expansion - Compression

DN 25 - 50

T-2420 Movement Eksenel (Axial) X=30mm, Yanal (Lateral) Y= ±50mm (100)

T-2440 Movement Eksenel (Axial) X=30mm, Yanal (Lateral) Y= ±100mm (200)

DN 65 - 300

T-2460 Movement Eksenel (Axial) X=60mm, Yanal (Lateral) Y= ±50mm (100)

T-2480 Movement Eksenel (Axial) X=60mm, Yanal (Lateral) Y= ±100mm (200)

Standartlar / Standards

Sertifikalar / Certificates :

Tasarım / Design : TS 10880

Bağlantı Boyutları / Connection Dimensions : TS EN 1092-1 (PN 16)

Testler / Tests : TS EN 12266-1

Uygulamalar / Applications

Sıcak ve soğuk su sistemleri, basınçlı hava, kızgın su, buhar, kızgın buhar, kızgın yağ sistemleri

Hot and cold water systems, compressed air, superheated water, steam, superheated steam systems, superheated oil systems



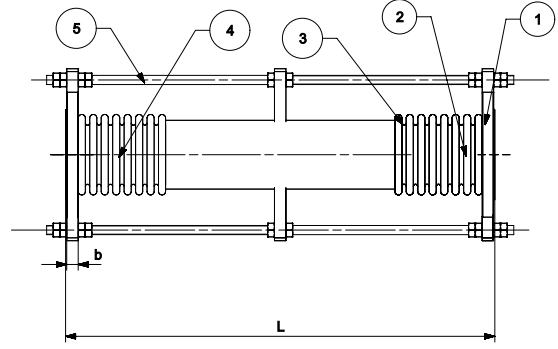
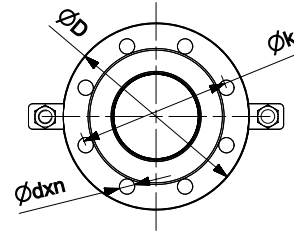
Malzeme Özellikleri Material Specifications

No Parça Adı / Part Name

- 1 Flanş / Flange
- 2 Körük / Bellow
- 3 Bant / Band
- 4 Ara Boru / Intermediate Pipe
- 5 Limit Rot / Limit Rod

Malzeme / Material

- St37-2 - Çelik / Steel
X5CrNi18 10 Paslanmaz Çelik / Stainless Steel 14301
X5CrNi18 10 Paslanmaz Çelik / Stainless Steel 14301
St37-2 - Çelik / Steel
St37-2 - Çelik / Steel



Ölçüler Dimensions

Anma Basıncı Nominal Pressure	16 Bar																
Anma Çapı Nominal Diameter	X = Eksenel Hareket / Axial Movement	Y = Yanal Hareket / Lateral Movement	Z = Açısal Hareket / Angular Movement	DN	25	32	40	50	65	80	100	125	150	200	250	300	
T-2420	30	±50mm (100)		L	350	350	350	450	-	-	-	-	-	-	-	-	
T-2440		±100mm (200)			550	550	550	650	-	-	-	-	-	-	-	-	
T-2460	60	±50mm (100)			-	-	-	-	450	500	500	650	650	700	800	950	
T-2480		±100mm (200)			-	-	-	-	650	700	700	850	850	900	1000	1150	
Boyutlar Dimensions (mm)	ØD				115	140	150	165	185	200	220	250	285	340	405	460	
	k				85	100	110	125	145	160	180	210	240	295	355	410	
	b				3,2	3,2	3,2	3,6	3,6	4	4,5	5	5	6,3	6,3	7,1	
	dxn				14x4	18x4	18x4	18x4	18x4	18x8	18x8	18x8	18x8	22x8	22x12	26x12	26x12