



TWO PARTIAL BALL VALVES

GENERAL FEATURES

The essential element in the ball valve is a ball which has a hole in the middle. This ball's 90° turn move it from fully opened to closed position. The ball valves are primarily used in places where it is necessary to open and close a lot or to open and close quickly.

The advantages are low pressure losses, easy opening and closing, good sealing, light weight and low space occupancy. Sealing; It is made up of two stages as a sphere seal and a shaft seal.

Ayvaz V-2P Two-Piece Stainless Steel Ball Valves, 10 bars under water are subjected to a 100% air test in the open and closed positions.

Material Structure:

Body: AISI304 Stainless Steel

Ball: AISI304 Stainless Steel

Connections:

Threaded

Nominal Diameters:

DN15 (1/2") - DN25 (2")

Pressure Rate:

DN15-DN25: 25 bar

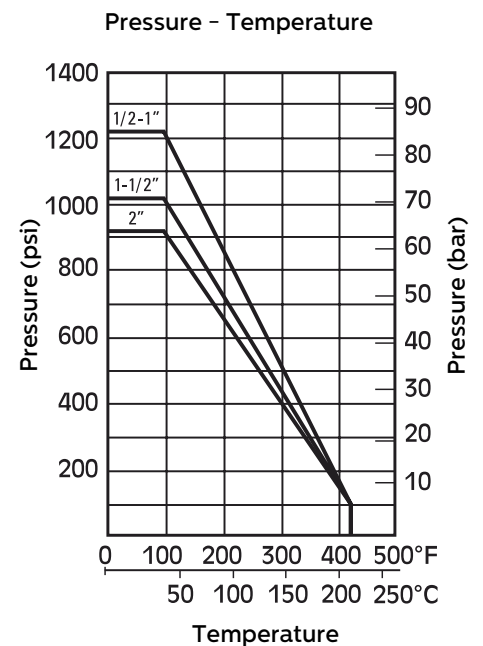
DN32-DN50: 20 bar

Temperature Range:

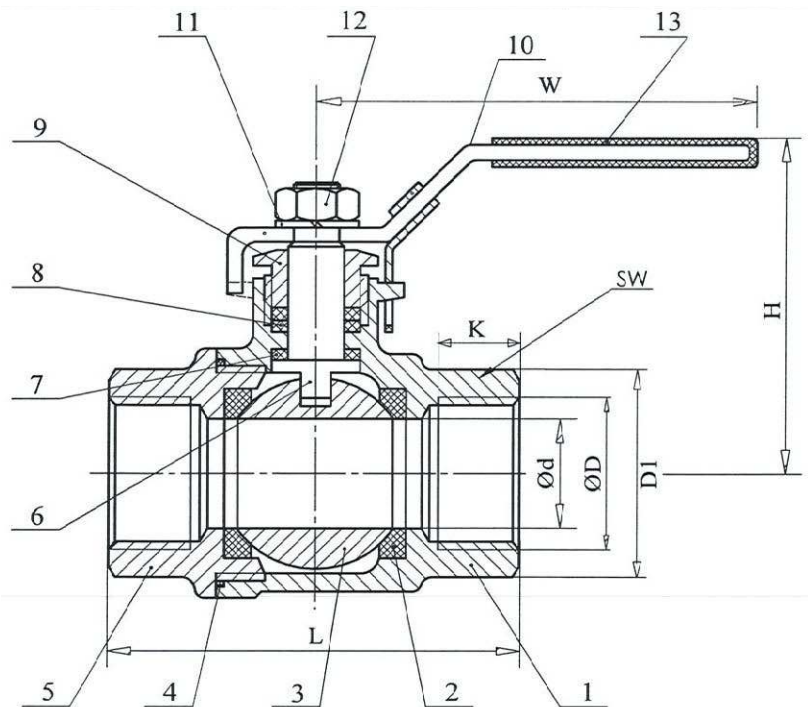
Depend on the material from -25°C to 180°C

Applications:

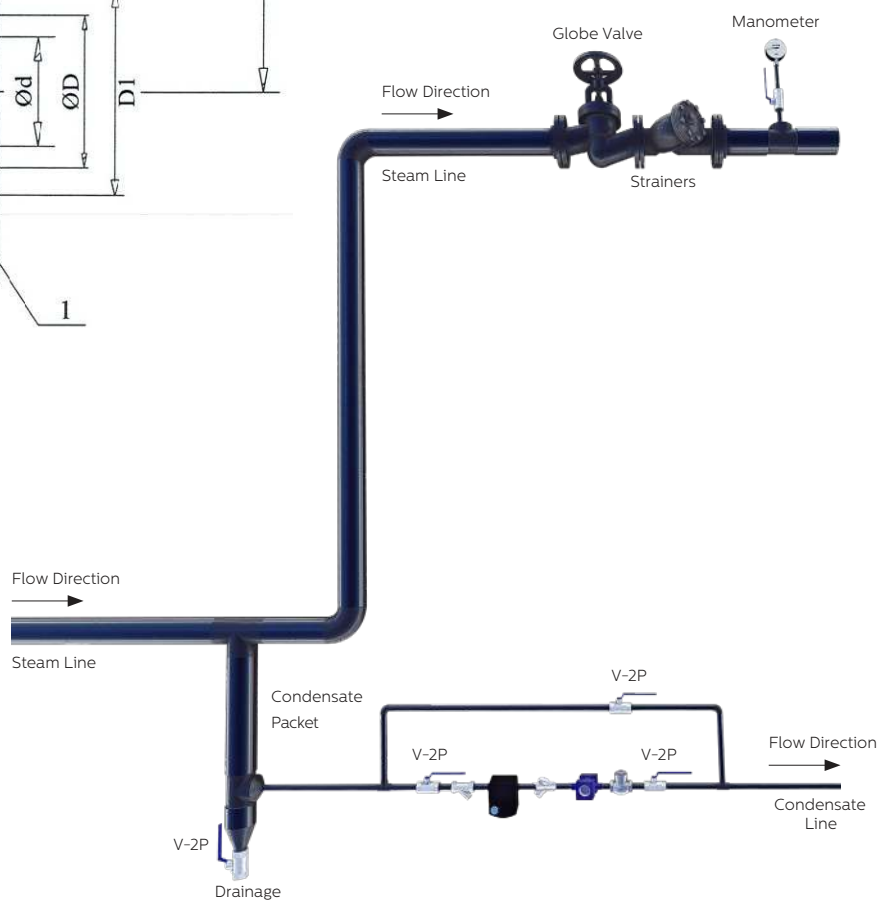
- Heating-cooling lines
- Food facilities
- Chemical industry
- Shipbuilding
- Paper factories



V-2P TWO PARTIAL BALL VALVES



3D INSTALLATION SAMPLE



PART LIST		
No	Part Name	Material
1	Body	CF8 (1.4301)
2	Ball Gasket	R-PTFE
3	Ball	SS304 (1.4301)
4	Body Teflon	PTFE
5	Cover	CF8 (1.4301)
6	Moving Stem	SS304 (1.4301)
7	Pressure Adj. Washer	PTFE
8	Sealing Nut	PTFE
9	Sealing Nut	SS304 (1.4301)
10	Handle	SS304 (1.4301)
11	Ring	SS304 (1.4301)
12	Nut	SS304 (1.4301)
13	Handle Cover	Plastic

DIMENSIONS										
Dia.	Ød	ØD	D1	K	SW	L	H	W	Nm	kg
DN15	15	1/2"	27	11	24	55	53	101	5	0,2
DN20	20	3/4"	34	12	30,5	65	57	102	8	0,3
DN25	25	1"	42	15	37	75	63	112	10	0,5
DN32	32	1 1/4"	51	16	46	85	75	128	14	0,8
DN40	40	1 1/2"	58	16	52,5	95	83	150	18	1
DN50	50	2"	71	17	63,5	110	93	160	25	1,5