



## Electric actuator

for small valves VVP47..., VXP47..., VMP47...

**SFP21/18**  
**SFP71/18**

- SFP21/18 AC 230 V operating voltage, 2-position control signal
- SFP71/18 AC 24 V operating voltage, 2-position control signal
- 105 N positioning force
- Spring return
- Manual adjustment
- For direct mounting with union nut (no tools required)
- Integral 1.8 m connecting cable
- Auxiliary switch, type ASC2.1/18 (optional)

### Use

The SFP21/18 and SFP71/18 actuators are used in conjunction with zone valves VVP47..., VXP47... and VMP47..., primarily in heating, ventilation, air conditioning and refrigeration systems for water-based control of low-temperature hot water and cooling water. The SFP.. actuators together with the 3-port valves VXP47.. are suitable for low leakage change over applications.

### Functions

The electric actuator requires an on/off controller (thermostat) to control the valve. If the temperature of the medium deviates from the set-point, the controller output signal causes the actuator to drive the valve open. When the temperature of the medium reaches the set-point, the control signal is cut off and the valve closes again.

## Types

Type	Operating voltage	Positioning time	Control signal	Connecting cable
SFP21/18	AC 230 V	40 s	2-position	1.8 m
SFP71/18	AC 24 V			

## Accessories

Type	Description	Switching point	Switching capacity	Connecting cable
ASC2.1/18	Auxiliary switch open/closed	At approx. 50% stroke	AC 250 V / 3(2) A	1.8 m

## Ordering

When ordering please specify the quantity, product name and type code.

*Example:* **2 Electric actuators, type SFP71/18 and  
2 auxiliary switches, type ASC2.1/18**

## Delivery

Actuators, valves and accessories are supplied separately.

## Compatibility

Type code	Valve type	$k_{vs}$ [m <sup>3</sup> /h]	PN class	Data sheet
VVP47...	2-port valves	0.25 ... 4.0	PN16	4847
VXP47...	3-port valves	0.25 ... 4.0		
VMP47...	3-port valves with T-bypass	0.25 ... 2.5		

## Technical design / Mechanical design

The valve is opened electrically by the actuator and closed by spring force. It incorporates a synchronous motor, a gear mechanism and a return spring. The electric motor is overload-resistant and anti-locking, so that continuous operation is possible. The maximum stroke is limited mechanically. The closing motion, by contrast, includes an overrun for the gear mechanism. This protects the gear mechanism from mechanical shock and increases service life. The valve is connected by an 1.8 m cable, which is an integral part of the actuator.

## Accessories

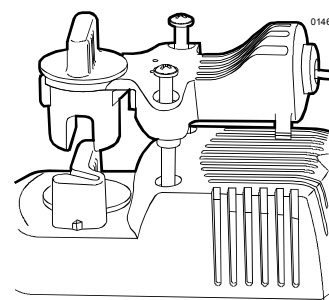
### ASC2.1/18 auxiliary switch

The optional auxiliary switch can be fitted to the actuator with two screws.

It switches at a stroke of approx. 50 %.

- Valve actuator de-energized:  
→ Auxiliary switch open
- Voltage applied to valve actuator:  
→ Auxiliary switch closed (50 ... 100 % stroke)
- Manual adjuster locked into position  
(approx. 90 % stroke):  
→ Auxiliary switch closed

See «Technical data» for further information on the auxiliary switch.



## Engineering

The admissible temperatures (see «Technical data») must be observed.

## Electrical connection



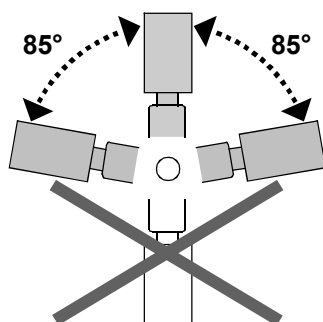
**Caution**

- The actuator may be operated only with alternating current (AC 230 V for SFP21/18 and AC 24V for SFP71/18)
- **Phase cut and pulse-width-modulated signals are not suitable.**
- Recommended number of opening/closing operations: approx. 50 per day, with 200 heating or cooling days

## Mounting

Mounting instructions are enclosed with the packaging.

## Orientation



## Commissioning

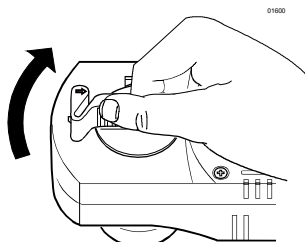
- Check the wiring.
- Check the functioning of the actuator and of the auxiliary switch, if fitted.

## Operating

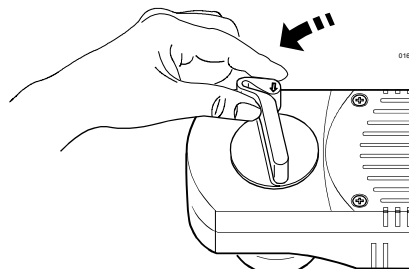
The valve can be opened manually by use of a lever on the actuator. When the valve is approximately 90% open this locks into position. When electrical operation is resumed, the locking mechanism is released automatically.

## Manual adjustment

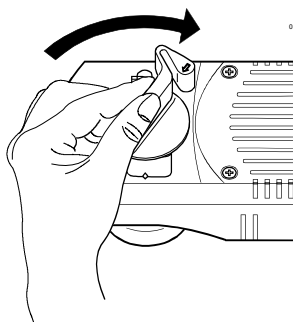
Opening the valve manually



Locking the lever into position at a valve opening of approx. 90%



Releasing the lever manually

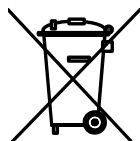


Rotate lever as far as the mechanical stop, and release.

## Maintenance

- The actuators require no maintenance.
- In the event of a fault, the actuator can be replaced without removing the valve. The operating voltage must be switched off during this process.
- The actuators cannot be repaired.

## Disposal



The controller includes electrical components and must not be disposed of as domestic waste.

**Current local legislation must be observed.**

## Warranty

The technical data given for these applications is valid only when the valves are used with the actuators described under «Compatibility».

**The use of type SFP... actuators with third-party valves invalidates any warranty offered by Siemens Building Technologies / HVAC Products.**

## Technical data

		SFP21/18	SFP71/18
Power supply	Operating voltage	AC 230 V	AC 24 V
	Voltage tolerance	±15%	±20%
	Frequency	50 Hz	
	Max. power consumption	9.8 VA	
	Fuse protection for incoming cable	Max. 3 A (external)	
Control	Control signal	On/off via temperature controller <i>Phase cut and pulse-width-modulated signals are not suitable.</i>	
	Opening/closing operations	Recommended number: approx. 10 000 / year (equivalent to approx. 50 per day)	
Operating data	Position with de-energized actuator 2-port valve (VVP47...) 3-port valve (VXP47... and VMP47...)	A → AB closed A → AB closed, B → AB open	
	Positioning time (opened by motor)	40 s	
	Nominal stroke	2.5 mm	
	Positioning force	105 N	
	Manual adjustment	0 ... 90 %	
	Admissible temperature of medium in the connected valve:	+1 ... +110 °C	
	Electrical connection	2-core, 1.8 mm 18 AWG (0.96 mm <sup>2</sup> )	
	Industry standards	Meets the requirements for <b>CE</b> marking: EMC Directive Low Voltage Directive  89/336/EEC 73/23/EEC	
Protection class		II to EN 60730 Section 2.7	III to EN 60730 Section 2.7
Housing protection standard		IP30 to DIN 40050, EN60529	

	SFP21/18	SFP71/18
Dimensions / Weight	See «Dimensions»	
Dimensions		
Weight		
without auxiliary switch	0.585 kg	0.585 kg
with auxiliary switch	0.692 kg	0.692 kg
Materials	Die-cast aluminum	
Housing	Polycarbonate	
Housing colors	Light gray, RAL7035	
Auxiliary switch (optional)	Changeover contact	
Switch type	at approx. 50 % stroke	
Switching point	AC 250 V 3 A resistive	
Switching capacity	2 A inductive	
Connecting cable	3-core, 1.8 mm	
	18 AWG (0.96 mm <sup>2</sup> )	

General ambient conditions	Operation IEC 721-3-3	Transport IEC 721-3-2	Storage IEC 721-3-2
Environmental conditions	Class 3K3	Class 2K3	Class 2K3
Temperature	+1 ... +50 °C	−25 ... +70 °C	−5 ... +50 °C
Humidity	5 ... 85 %rh	< 95 %rh	5 ... 95 %rh

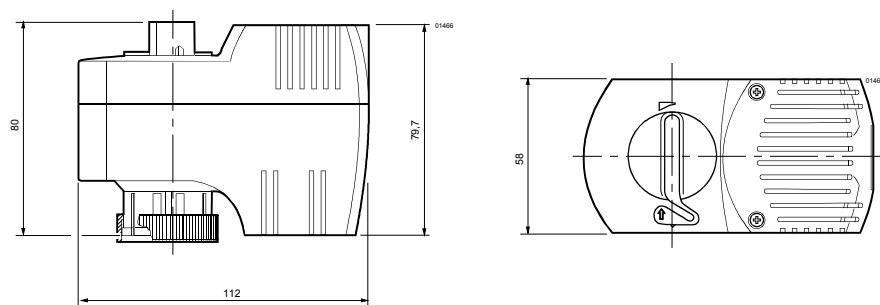
## Connecting cable

Cable	SFP21/18 AC 230 V		SFP71/18 AC 24 V	
	Cable color	Connection	Cable color	Connection
<b>Operating voltage</b> 2-core	Brown	L	Red	G
	Blue	N	Black	G0
<b>Auxil. switch ASC2.1/18</b> <b>(optional)</b> 3-core	Black / Red	Input	Black / Red	Input
	Black / Blue	N/C contact	Black / Blue	N/C contact
	Black / Pink	N/O contact	Black / Pink	N/O contact

## Dimensions

All dimensions in mm

### Actuators without auxiliary switch SFP21/18, SFP71/18



### Actuators with auxiliary switches SFP21/18, SFP71/18 with ASC2.1/18

