

# ROOM THERMOSTAT SERIES TMA110

ESBE thermostat Series TMA110 consists of range of electro-mechanical room thermostats with gas filled bellow for use in heating applications.



TMA115



TMA116

## APPLICATION

The ESBE series TMA110 is a range of ON/OFF electro-mechanical room thermostats for use in heating applications. The thermostats can be connected to 2-point or spring return actuator, a circulation pump or directly to a boiler.

## VERSIONS

The series consist of 2 different versions:

- TMA115 is a thermostat for use in heating application. The regulating temperature range is between 8°C and 30°C and is set by the knob. A pin stop system can limit the set-point range. The contact rating is 16(2,5)A@250V AC.
- TMA116 is a thermostat for use in heating application with an ON/OFF switch and light indication. The regulating temperature range is between 8°C and 30°C and is set by the knob. A pin stop system can limit the set-point range. The light is on when the relay is active and must be powered with 230V AC. The contact rating is 10(1,5)A@250V AC.

## TECHNICAL DATA

Ambient temperature: \_\_\_\_\_ max. 40°C  
 \_\_\_\_\_ min. 0°C  
 Ambient humidity: \_\_\_\_\_ 20...80% RH non-condensating  
 Setting range: \_\_\_\_\_ see table  
 Sensor type: \_\_\_\_\_ Gas filled bellow  
 Differential/ hysteresis: \_\_\_\_\_ <1°K  
 ErP Temperature controls class: \_\_\_\_\_ I  
 Energy efficiency contribution: \_\_\_\_\_ 1%  
 Enclosure rating: \_\_\_\_\_ IP30  
 Contact rating — TMA115: \_\_\_\_\_ 16(2,5)A @ 250V AC  
 TMA116: \_\_\_\_\_ 10(1,5)A @ 250V AC  
 Protection class: \_\_\_\_\_ II

Material  
 Housing: \_\_\_\_\_ ABS + PC self-extinguishing VO

## Conformities and certificates:

CE LVD 2014/35/EU  
 EMC 2014/30/EU  
 RoHS3 2015/863/EU



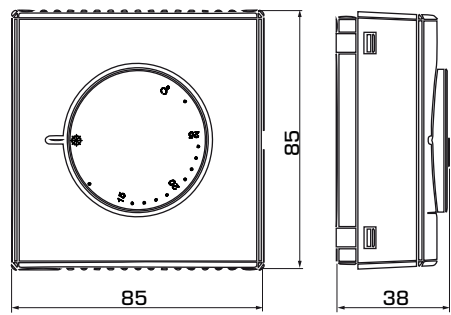
## SUITABLE ESBE ACTUATORS

Series	Control signal	ARA600	90	ARC300	ARD100	ARD200	ALG400	VZC/VZD	MBA100	ZRS100
<b>TMA115, TMA116</b>	2-point	ARA6x5, ARA6x6, ARA6x7, ARA6x8	M97, M98	ARC361, ARC363	ARD155, ARD157	ARD255, ARD257	ALG434, ALG436	•	•	•

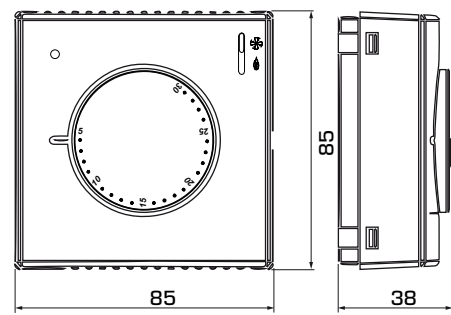
ROOM THERMOSTATS

# ROOM THERMOSTAT

## SERIES TMA110



TMA115



TMA116

**SERIES TMA110**

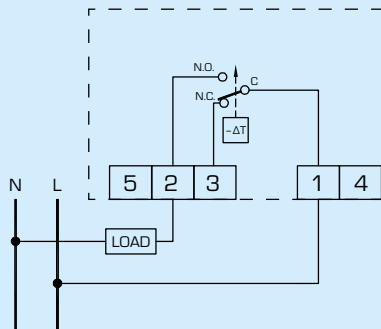
Art. No.	Reference	Application	Voltage	Contact rating	Setting range	Weight [kg]	Note
18000500	TMA115	Heating	-	16(2,5)A@250V AC	5-30°C	0,11	ON/OFF switch
18000600	TMA116		-	10(1,5)A@250V AC		0,12	

# ROOM THERMOSTAT SERIES TMA110

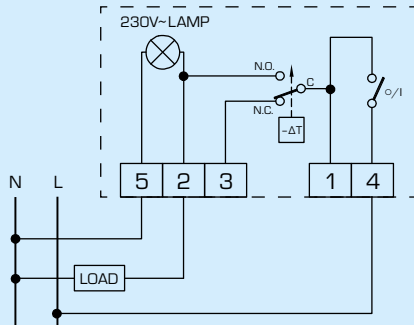
## WIRING

The wirings are typical examples of application; for further information, please check User instruction for all possibilities.

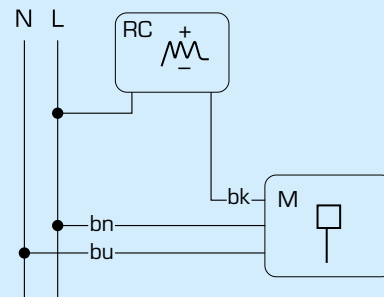
### TMA115



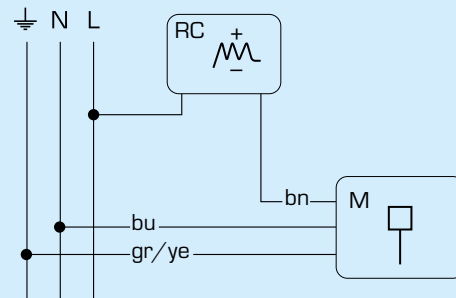
### TMA116



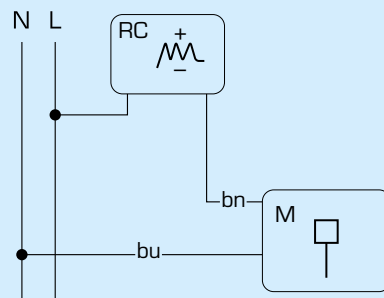
## ELECTRICAL CONNECTION TO ESBE ACTUATORS



Series ARA600, 90, ARC300, VZC/VZD, MBA100



Series ZRS100



Series ARD100, ARD200, ALG400