

BRASS SOLENOID VALVE 93

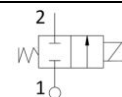


- Coil size 42mm
- 2/2 way NC - Direct acting
- Cold / high temperature fluids
- Multi purpose usage
- ED 100%

Technical data







Body material	Brass	
Seal material	EPDM – FPM	
Tube material	Brass	
Working fluids	Air, water, steam	
Electrical connect.	6,3 x 0,8 fast-on terminal	
Insulation class	H	
220-230VAC 50-60Hz Approvals: CE; VDE	Power (VA)	27
	Amb. T. (°C)	80
100-120VAC 60Hz Approvals: CE; UL	Fluid T. (°C)	155
	Power (W)	14
12-24 VDC Approvals: CE	Amb. T. (°C)	80
	Fluid T. (°C)	150

Performance



Pipes IN - OUT	Orifice size (mm)	Flow (m3/h)	MOPD (bar)	
			AC	DC
G 1/4 - 3/8 - 1/2	2,8	0,230	20	10
1/2 NPT - G 1/4 - 3/8 - 1/2	3,5	0,300	15	7
G 3/8 - 1/2	5,0	0,480	5	3
G 3/8 - 1/2	5,7	0,415	2.5	1.5
G 1/2 (Series 9950)	10,0	0,800	1.5	1

Hydraulic connection

<p>IN / OUT 1/2"NPT Series 9309</p> 	<p>IN / OUT 1/4" Series 9312</p> 	<p>IN / OUT 3/8" Series 9313</p> 	<p>IN / OUT 1/2" Series 9314</p> 
<p>IN / OUT 3/8" + man.override Series 9301</p> 	<p>IN / OUT 1/2" + man.override Series 9300 - 9950</p> 		

Availability coil orientation

