

CR50+CR43

**Rechargeable motorized
in-ground solar cover reel set**

USER MANUAL

**Motorisation rechargeable pour
enrouleurs de piscine enterrées**

MANUEL D'UTILISATION

**Set de enrollador de cobetor solar de suelo
motorizado con bateria recargable**

MANUAL DE USUARIO

**Set ricaricabile motorizzato di avvolgitori
per copertura solare interrata**

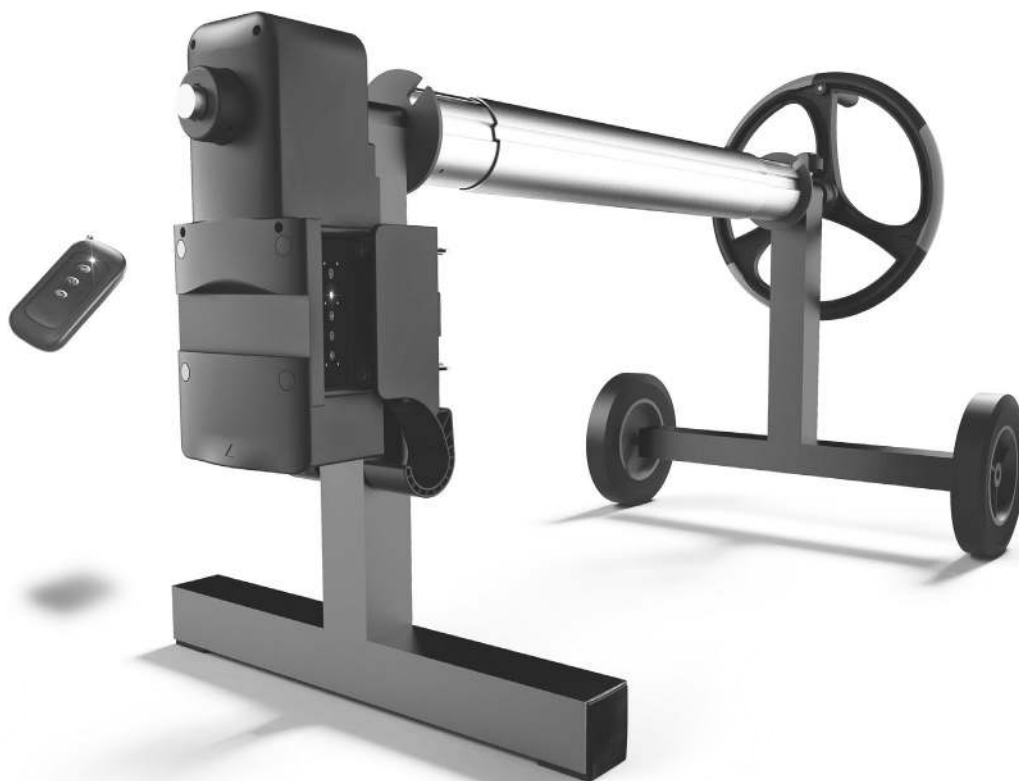
MANUALE D'USO

**Wiederaufladbares motorisiertes
In-Ground-Solardeckel-Rollenset**

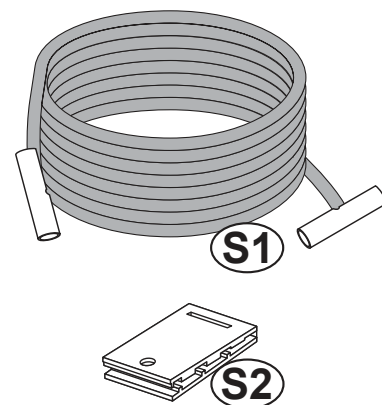
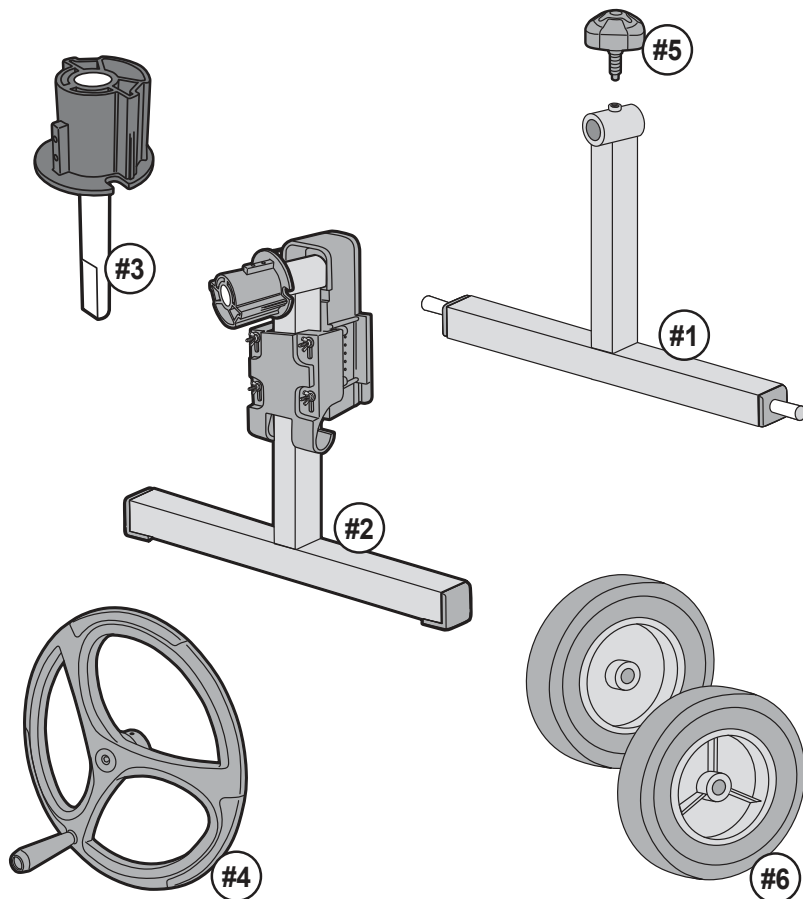
GEBRAUCHSANWEISUNG

**Oplaadbaar gemotoriseerde zonnespoelset
voor ingebouwde zwembaden**

HANDLEIDING



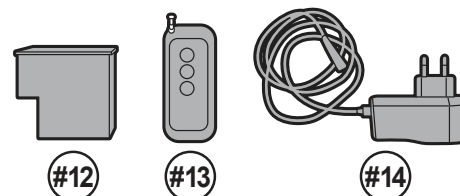
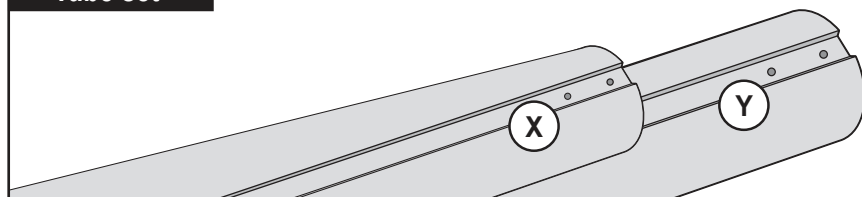
PARTS DIAGRAM



Screw bag

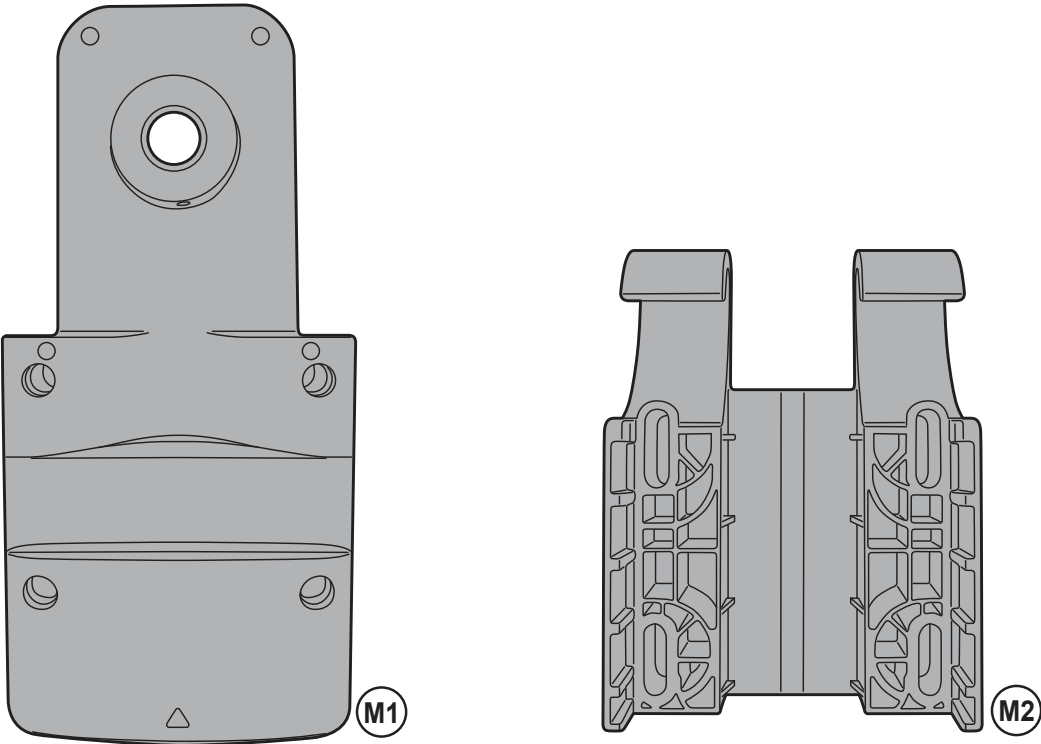


Tube set

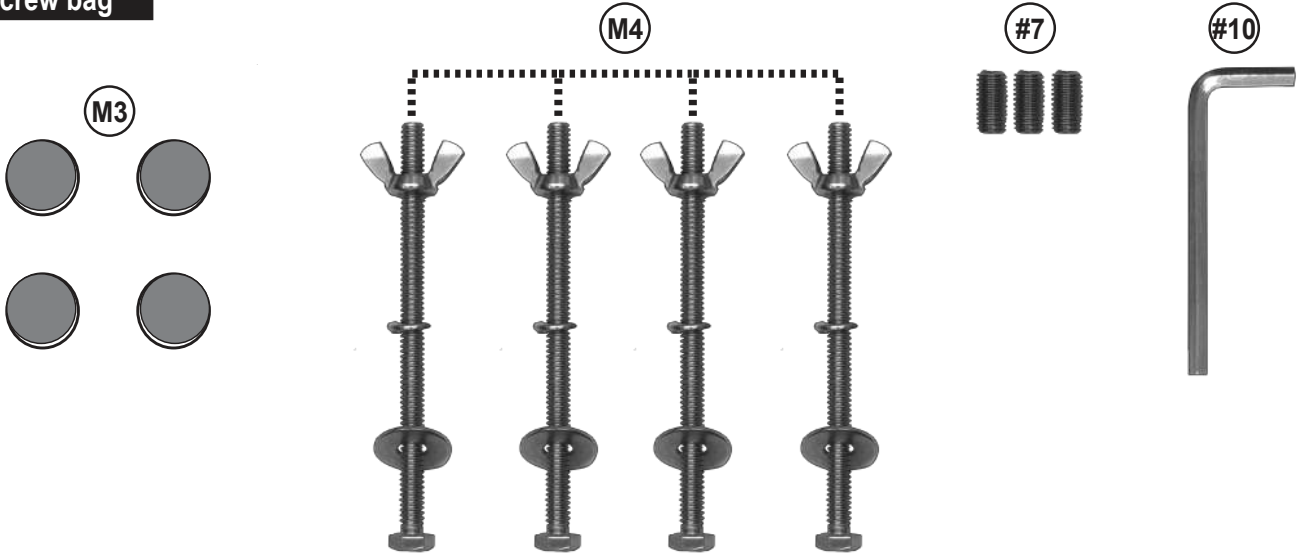


Part number	Qty	Description	Replacement Parts number
#1	1	Frame (for #6 wheel assembly)	K943-01
#2	1	Main frame (preinstalled with motorized unit)	CR50ASM14R , CR50ASM14R/US (for USA only)
#3	1	Hub	K943-03R
#4	1	Crank	K943-05/DGRY
#5	1	Threaded locking knob (use only for MANUAL OPERATION)	K826-A03/DGRY
#6	2	Wheels	K826-013/DGRY
#7	1	Set screw	CR43ASM01
#8	6	Pan screw	
#9	12	Self-tapping screw	
#10	1	Hex wrench	
#11	2	Wheel retain ring	
#12	1	Battery case (installed with rechargeable Li-ion battery - Model: KOK18650-200B3P)	CR50ASM09 , CR50ASM09/US (for USA only)
#13	1	Remote control (maximum remote distance 30 meters)	CR50ASM12 , CR50ASM12/US (for USA only) (Battery is not included in replacement unit)
#14	1	Adaptor	CR5000163EU , CR5000163/US (for USA only)
S1	10	Elastic strap	CR43ASM02
S2	10	Clip	
X	2	Tube (small diameter)	CR91/BX
Y	1	Tube (bigger diameter)	

Replacement parts for motorized unit



Screw bag



Part number	Qty	Description	Replacement Parts number
M1	1	Main motorized unit	CR50ASM01-O , CR50ASM01-O/US (for USA only)
M2	1	Back plate	CR5000401
M3	4	Round decorative covers	CR50ASM13
M4	4	Long screw (with butterfly hand screw,locking washer and round washer)	
#7	3	Set screw	
#10	1	Hex wrench	

Battery:
Rechargeable Li-ion battery pack, 2000mAh, 11.1V, 22.2Wh
Charging voltage: 12.6V DC, 1.0 A

Remark: Product/parts photos/drawings in this manual are for demonstration only.
Product/parts in photos/drawings may vary with the model purchased.

SAFETY WARNINGS & INSTRUCTIONS

WARNING: Important safety instructions. It is important for the safety of persons to follow these instructions.

SAVE THESE INSTRUCTIONS

WARNING!

- This product shall not be used by children. Keep the product and its cord out of reach of children.
- This product can be used by persons with reduced physical, sensory or mental capabilities or lack of experience and knowledge if they have been given supervision or instruction concerning use of the product in a safe way and understand the hazards involved.
- Use only the original remote control provided.
- For the purposes of recharging the battery, only use the detachable supply unit (external adaptor model number: DSS12D-1261000-B / DSS12D-1261000-C / DSS12D-1261000-D / LX126100U) that provided with this product to charge the battery.
- Never allow children to operate this product.
- This product is an automatic cover reel. DO NOT install the threaded locking knob and turn the crank to rotate the tube set unless you have already changed the settings to manual mode according to the instructions under **"Switch to manual operation"**.
- Frequently examine the installation for imbalance, signs of wear, or damage to the battery connection cord and flexible cord of the adaptor. Do not use the product if you notice the aforementioned signs. Contact your dealer for your replacement needs.
- Children should not play with the product. Keep the remote control away from children.
- Cleaning and user maintenance should not be carried out by children.
- Unplug the battery case before installation.
- Unplug the battery case before cleaning, commencing maintenance and replacing parts.
- A-weighted emission sound pressure level of the motor is equal to or less than 70dB(A).
- Never attempt to stop the tube set from rolling forcibly, as it could damage the motorized unit.
- DO NOT splash water directly at the motorized unit.
- Never leave this cover reel unattended during operation.
- Use the remote control indoors. Do not expose the remote control to rain and water.
- The maximum torque is 4.5Nm (including tube sets and a wet pool solar cover).
- The maximum loading weight is 45KG (99lbs) including tube sets and a wet pool solar cover.
- Rating operation time: up to 45 minutes on battery.
- This product is not intended for continued operation. Allow a break of at least 30 minutes in between each cycle.
- DO NOT use power extension cords.
- Connect the external adaptor to a power source through a residential current device (RCD) / a ground fault circuit interrupter (GFCI). If in doubt, consult a qualified professional electrician.
- Do not use this product if any damage is detected.
- Replace damaged parts as soon as possible. Only use parts certified by the distributor or manufacturer.
- Disconnect the external adaptor from the power source, before unplugging it from the battery case.
- The product is only to be used with the external adaptor delivered with this product.
- Never use the external adaptor for anything other than charging the battery case.
- Never insert body parts, clothing or other objects into the openings and moving parts of this product.
- Never attempt in any way to disassemble this product.
- Under no circumstances should you attempt to disassemble the motorized unit and replace the gear, motor, and battery by yourself.
- Do not recharge non-rechargeable batteries due to risk of explosion.
- The supply terminal in battery case is not to be short-circuited.
- Remove the exhausted battery from the remote control and dispose it safely.
- If the remote control will not be used for an extended period, remove the battery and store it in indoor.
- External adaptor and battery case:
 - For indoor use only.
 - The external adaptor and battery case should not be used outdoors, nor should it be exposed to rain, humidity, any liquid or heat.
 - Keep the external adaptor and battery case out of reach of children.
 - Never use the external adaptor and battery case if any damage is detected.

- DO NOT handle the external adaptor and battery case with wet hands.
- DO NOT handle the external adaptor, and battery case while charging with wet hands and without shoes.
- Keep the external adaptor disconnected from power when it is not in use.
- Never attempt to open the external adaptor and battery case.
- The external flexible cable of the external adaptor cannot be replaced. If the cable is damaged, replace the entire external adaptor with the same model.
- Make sure the battery case is completely dry before charging.

CAUTION!

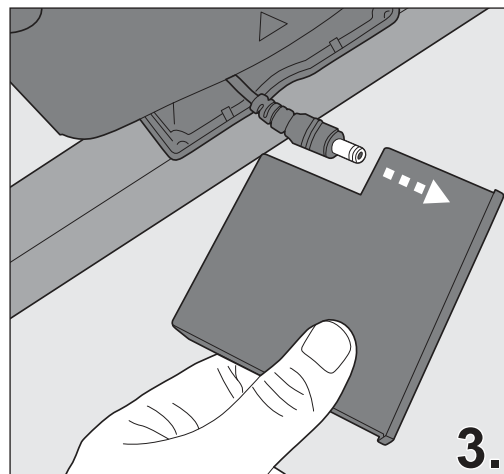
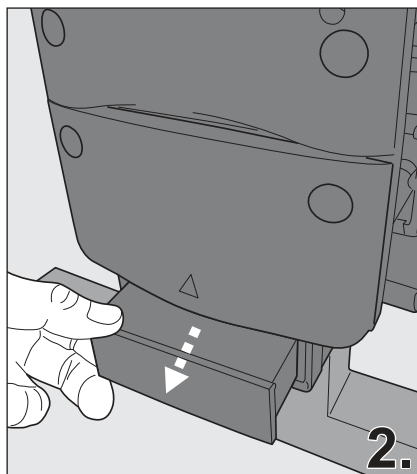
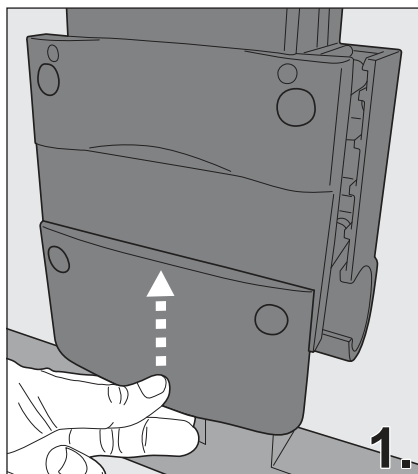
- Use only the original accessories delivered with this product.
- Only use the battery case for its intended purpose as outlined in this manual.
- To avoid damaging the external adaptor and the cord, do not tug the cord to disconnect it from the power source and battery case.
- Charge the battery case indoors in a clean, dry area with good ventilation and an ambient temperature between 5°C (41°F) and 35°C (95°F).
- DO NOT leave the battery case charged for over 20 hours.
- If the product will not be used for an extended period, uninstall it and use a damp cloth to clean and dry the whole unit and its accessories. Make sure to charge the battery case (installed with rechargeable Li-ion battery) to about 30% to 50% of the battery capacity before it is stored. Store in a well-ventilated area away from sunlight, heat, ignition sources, pool chemicals, and children. Recharge the battery case every three months.

Above warnings and cautions are not intended to incorporate all possible instances for risks and / or severe injuries. Pool owners should always exercise extra caution and common sense when utilizing the product.

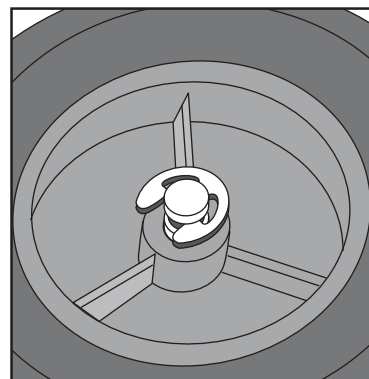
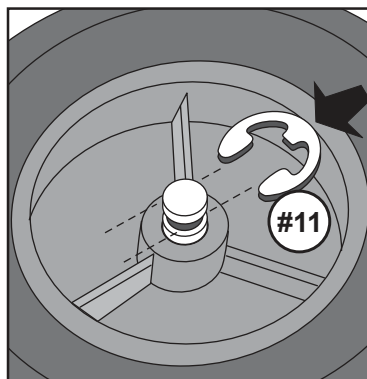
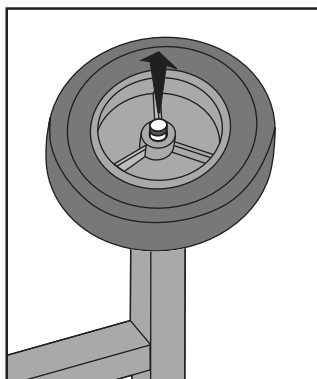
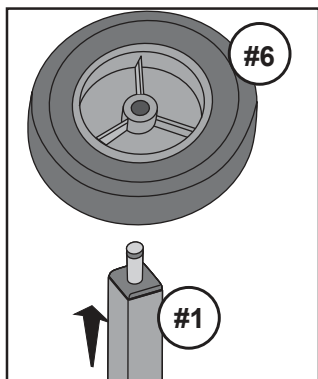
SET UP

WARNING! Important safety instructions. Follow all instructions, since incorrect installation can lead to severe injury.

WARNING! Unplug the battery case before installation

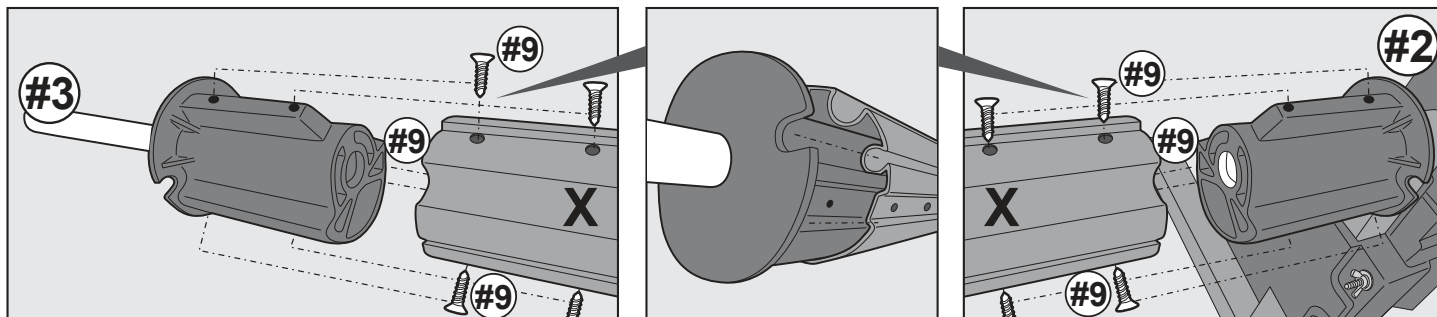


• Wheels installation



- Slide the wheel "#6" onto the axis of the frame "#1".
- Put the retaining ring "#11" over the wheel and align the hook end of retaining ring to the groove around the axis.
- Use a screwdriver to assist with pushing the retaining ring completely down into the groove of the axis.
- Make sure the retaining ring is in place and the wheel is totally secured under the retaining ring before moving onto the next step.

• Connecting tube X to hubs



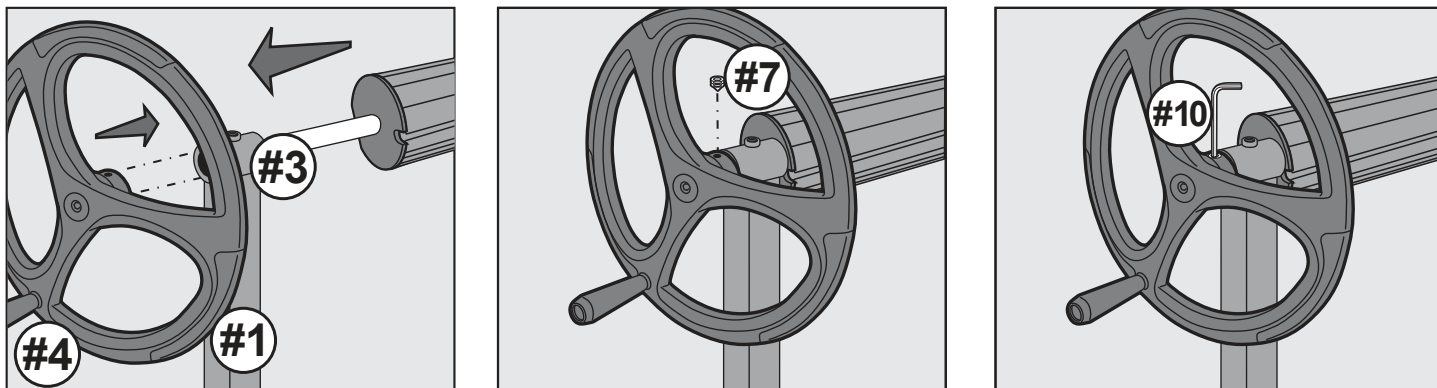
The "X" tube section has a smaller diameter and the "Y" tube section has a bigger diameter. The "Y" tube section is to be placed in the middle to connect sections "X" on each side.

- Align the groove on the hub with pre-drilled holes on one of tubes "X", and insert the hub "#3" into one end of tube "X". Secure the assembly with two self tapping screws "#9" on pre-drilled holes.

NOTE: Make sure to follow the direction as shown in the diagram above to align the hub to the tube.

- Follow the same assembly instruction to connect the hub of main frame "#2" to another tube "X" and secure the assembly with self tapping screws "#9".

• Connecting the crank to the frame and hub (preinstalled with tube x)



Insert the axle of short hub "#3" through the chamber at the top of the frame "#1". Align and slide the crank wheel "#4" onto the hub axle until it stops. Put the set screw "#7" on the hole of the crank and then fasten it by the hex wrench "#10" to secure the crank on the short hub. **IMPORTANT NOTE: DO NOT DRIVE THE CRANK UNLESS IT IS IN MANUAL OPERATION.**

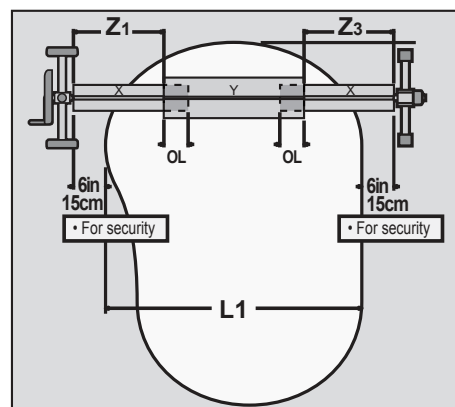
• Configuring the tube set

Figuring out the required total length of assembled tube set.

- Measure the maximum width of your pool (between the pool inner edge) = L1.
- Insert the tubes "X" into the tubes "Y", and slide them until you have the required size + 6 inches (15cm) margin on both the right and left side of L1 as shown in the diagram.
- Ensure that the tube "Y" is exactly centered between tube "X", Z1 and Z3 are equal.
- Also ensure that there is a minimum tube overlap "OL" of 17.5 inches (45cm) in each tube connection.

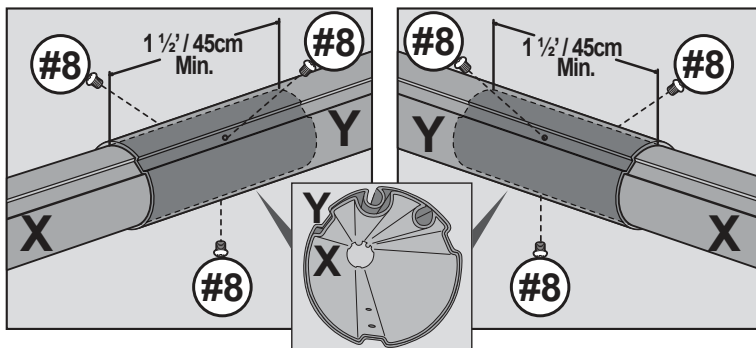
Tips: After figuring out the required overlapping that achieve a total length of (L1 + 12inches (30cm)), measure and use a pencil to mark a line on tube "X" as a finishing line for overlapping.

The maximum loading weight is 45Kg (99lbs) including tube sets and a wet pool solar cover.



Connecting both X and Y tubes together to complete the whole tube set

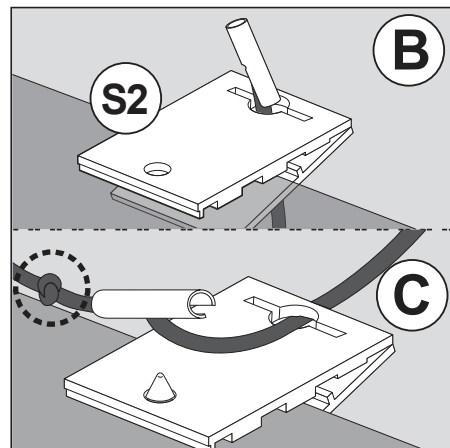
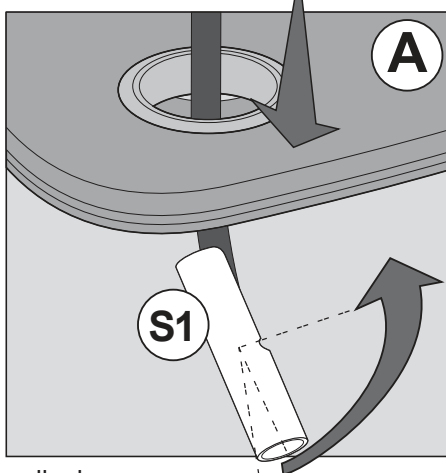
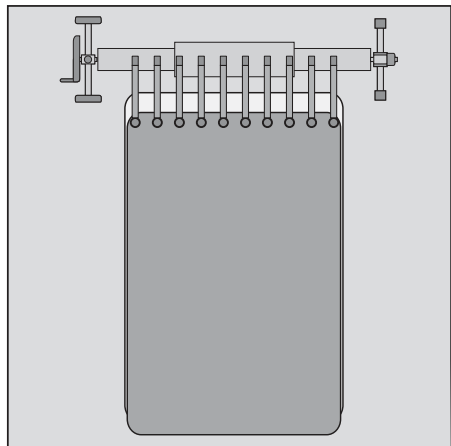
To connect the tubes, align and slide the smaller tube "X" into the bigger tube "Y" until the required overlapping is achieved. Secure the tube connection by fastening 3 screws "#8" into the pre-drilled holes on tube "Y". The whole cover reel installation is now done and ready for attachment of pool cover.



• Attaching pool cover to the cover reel

Attaching elastic straps to the pool cover

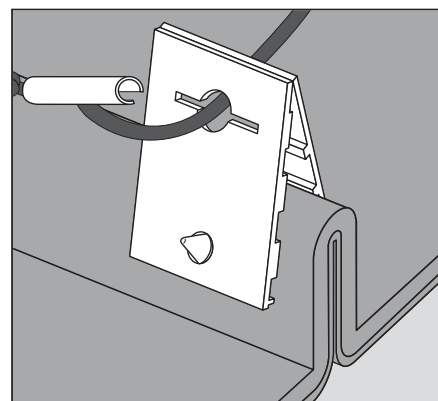
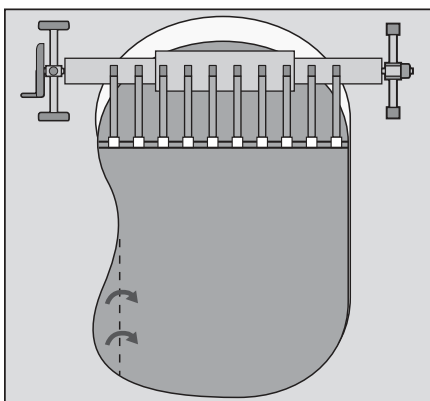
- For rectangular shaped in-ground pools



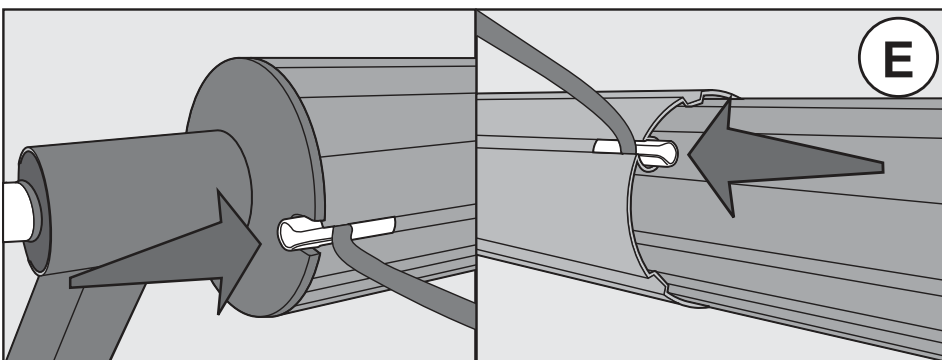
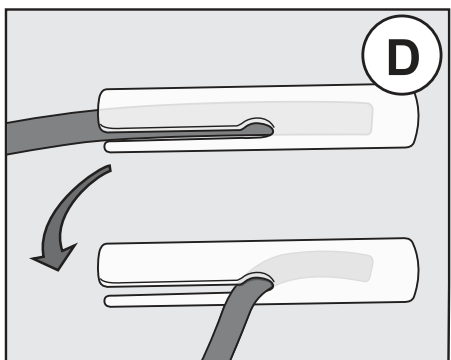
- Lay the cover over the pool and align accordingly.
- If you have grommets on the cover, you can put the plastic end of elastic strap "S1" through the grommet and then turn the plastic end by 90 degrees (perpendicular to the straps, Diagram A).
- If there are no grommets, you can attach the cover clip "S2" by snapping them onto the cover. Make sure to position the cover clips along the cover at the same intervals as the elastic straps "S1" will be attached to the tube. After fixing the clips to the cover, insert the plastic end through the slot of each clip (Diagram B).
- You can adjust the length of the string by sliding the plastic end along the string, and then tying a knot to fix the desired length (Diagram C).
- Ensure the length of the string allows the cover to lay flat on the pool to prevent wind from getting inside under the cover.

- For round or oval-shaped in-ground pools

- Lay the cover over the pool and align accordingly. Fold an edge on the cover so that the width is sufficient to assemble a cover clip "S2" on it. Position the cover clips along the cover at the same intervals as they will be attached to the tube. Follow the steps illustrated for diagram B and C to fix the cover strings to the cover clip and adjust the desired strap length.



Attaching the plastic strings to grooved tubes



- Before assembling the elastic straps to the tubes, turn the plastic piece at the end of the string by 90 degrees (Diagram D).
- Insert the plastic end of each elastic strap into the tubes as shown in diagram E, and position them along the tubes at even intervals.

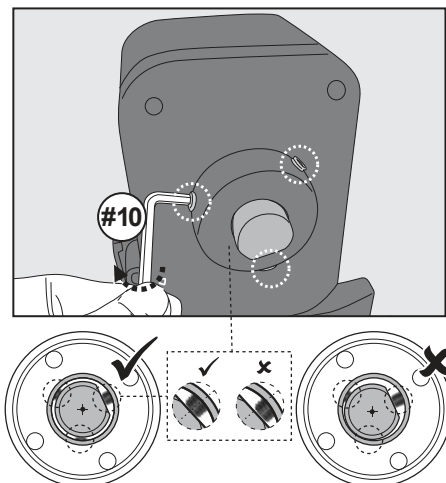
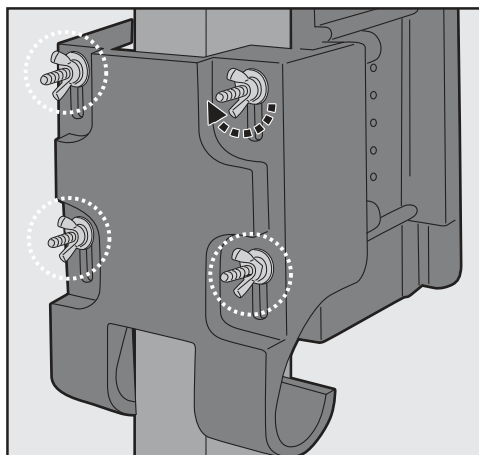
Note: if necessary, go to "OPERATION" for instructions on how to turn the tube set to locate the groove for elastic strap attachment.

NEVER ATTEMPT TO DRIVE THE CRANK.

GETTING STARTED

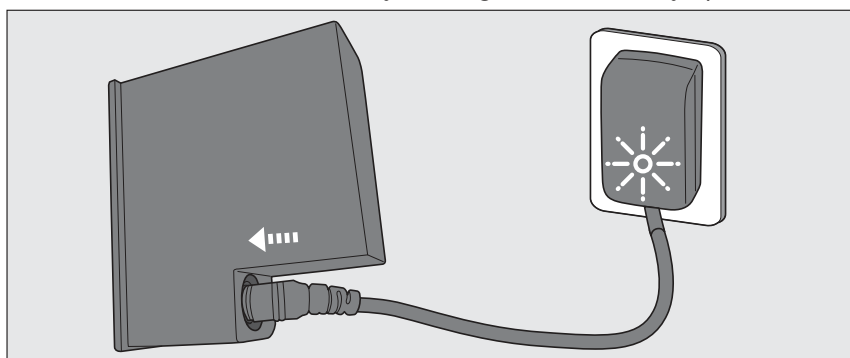
• Motorized unit inspection

Tighten the butterfly hand screws and set screw (with hex wrench provided) on motorized unit as shown by hand to verify if they are secured enough. If necessary, tighten them further. Tighten by hand only.



• Charging the battery

IMPORTANT NOTE: Fully charge the battery (about 3-4 hours) before using it for the first time.



Red light – Charging
Green light – Charged

Note: The Battery case is not waterproof.
Make sure it is dry at all times.

WARNING!

- Use only the original external adaptor provided.
- Charging must be done indoors, in a well-ventilated area away from sunlight, children, heat, ignition sources, and with an ambient temperature between 5°C(41°F) and 35°C (95°F).

NOTE: Do not leave the battery charged for over 20 hours.

1. Connect the battery case to the adaptor as shown above. Connect the adaptor to the power source. Once the battery case begins charging, the indicator light on the external adaptor will turn red.

Normally, it takes about 2.5-3.5 hours to reach a full charge. The indicator light will turn green when the battery is almost fully charged.

- Immediately disconnect the external adaptor from the power source if you detect any of the following conditions:
 - Offensive or unusual odor
 - Excessive heat
 - Deformation, cracks, leaks
 - Smoke

2. When charging is complete, disconnect the adaptor from the power source and unplug it from the battery case. Reverse steps to connect the battery case to the motorized unit and close the battery compartment cover. **IMPORTANT NOTE:** Make sure to close the battery compartment cover completely; otherwise water may leak in during operation and damage to the battery.

NOTE: Rechargeable lithium-ion battery is classified as a consumable item. It has a limited life and will gradually lose its capacity to hold a charge. Therefore, the running time of the motorized unit will gradually reduce after repeated charging and discharging throughout its product life.





NOTE: Let the battery case rest for around 30 – 40 minutes before charging it again.

OPERATION

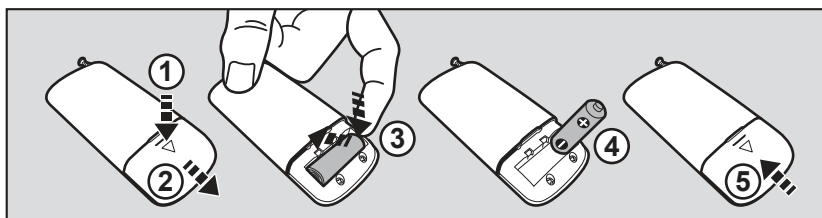
WARNING! Make sure the threaded locking knob "#5" is not installed/locked to avoid damaging the motorized unit in operation.

You can operate the motorized unit by pressing the buttons on the unit and the remote control respectively.

NOTE: Open the battery compartment of the remote control and remove plastic sheet before operation.

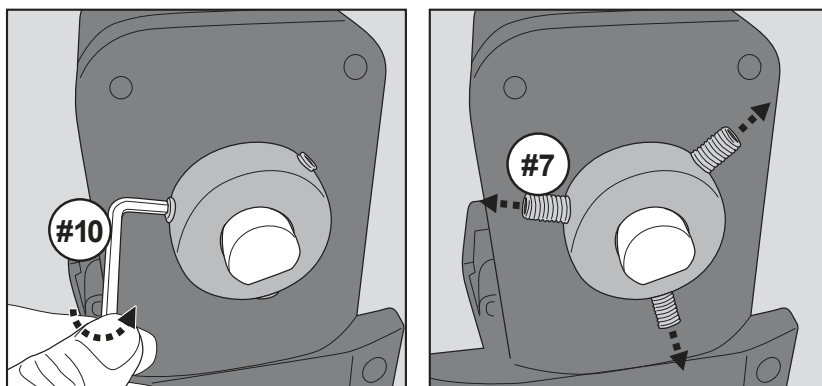
Button	Motorized unit	Remote control
	POWER ON/OFF Indicator light located below this button (on motorized unit) will light up once power is on	Not available. Make sure to power on before using remote control. Note: The remote control is not waterproof. Make sure it is dry at all times.
	Rotate the tube set clockwise	Rotate the tube set clockwise (when facing the motorized unit)
	STOP	STOP
	Rotate the tube set anticlockwise	Rotate the tube set anticlockwise (when facing the motorized unit)

• Remote control battery replacement



• Switch to manual operation

- Use a hex wrench "#10" to unfasten 3 set screws "#7" on the round knob to release the reel axle.

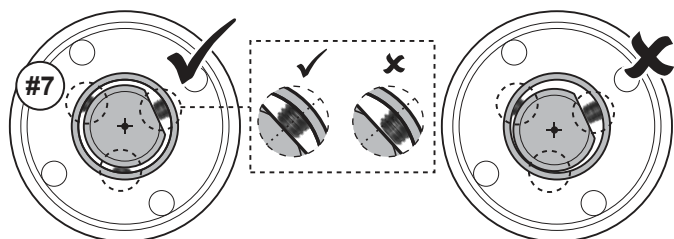
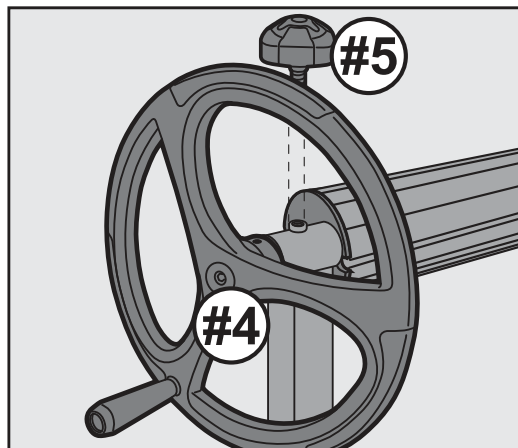


- Assembling threaded locking knob on the frame (for locking the reel/crank in position)

Screw the threaded locking knob "#5" to the hole at the top of frame "#1" (not to tighten the knob to lock the reel/crank in position).

Now you can use the crank to roll the pool cover onto the tube.

To restore the motorized operation, before starting, use hex wrench "#10" to fasten 3 set screws "#7" to secure the reel and ensure the threaded locking knob "#5" is not locked. Tighten each set screw evenly to keep the axle in the centre.



MAINTENANCE & STORAGE

WARNING!

- Unplug the battery case before cleaning, carrying out maintenance and replacing parts.
- Cleaning and user maintenance should not be carried out by children.

NOTE:

1. The battery discharges on its own during storage. Make sure to charge the battery case (installed with rechargeable Li-ion battery) to about 30% to 50% of the battery capacity before it is stored.
2. You must re-charge the battery at least once every three months when it is not in use.
 - Unplug the external adaptor from the socket and then unplug the adapter jack from the charging case.
 - Use a damp cloth to clean and dry the motorized unit, remote control and its accessories.
 - Store them in a well-ventilated area away from sunlight, heat, ignition sources, pool chemicals and from children. Ambient temperature for storage should be 10°C – 25°C (50°F – 77°F). NOTE: A higher storage temperature may reduce the battery life.

WARNING!

- Under no circumstances should you attempt to disassemble the motorized unit & battery case to replace the gear, motor and battery by yourself.

CAUTION!

- Excessive heat can damage the battery and reduce its lifespan as a result.
- Life span of battery is reduced if the following happens:
 - Battery appears damaged or will not charge fully.
 - Battery operation time is noticeably reduced. Observe and note the operation time during the first few uses (on a full charge). Use this information as a reference point to compare operation time with older batteries.
- The battery must be removed from the product before it is disposed of.
- The battery is to be disposed of safely and according to local ordinances or regulations.

NOTE: Incorrect maintenance may reduce the battery life and affect its capacity as a result.

BATTERY DISPOSAL

Your product is equipped with a maintenance-free rechargeable lithium-ion battery pack, which must be disposed of properly. Recycling is required; please contact your local authority for more information.

WARNING! Never attempt to disassemble a battery pack.

- Remove all personal items such as rings, bracelets, necklaces and watches when the battery pack is unwired from the battery case.
- A battery can produce a short circuit current high enough to weld a ring (or similar item) to metal, causing a severe burn in the process.
- Wear complete eye protection, gloves and protective clothing as the battery pack is removed.
- Avoid touching the wires altogether and ensure they do not make contact with any metal items, which could cause sparking and/or short circuit the battery.
- Never smoke or allow a spark or flame in the vicinity of the battery.
- Do not expose the battery to fire or intense heat as this may result in an explosion.

CAUTION!

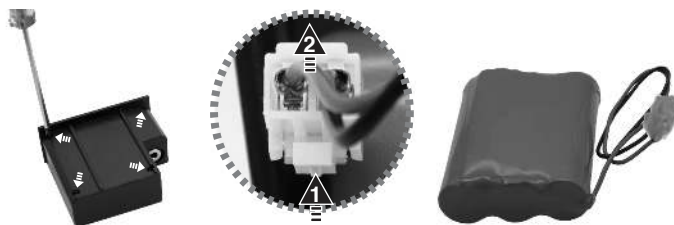
- If a battery leak occurs, avoid contact with the leaking fluids and place the damaged battery in a plastic bag.
- If leaking fluids come in contact with skin and clothing, wash immediately with plenty of soap and water.
 - If leaking fluids come in contact with eyes, do not rub eyes, immediately flush eyes with cool running water for at least 15 minutes and do not rub them. Seek medical attention as soon as possible.

How to remove the battery pack(To be done by authorized technician)

Recommended tools (not included): Screwdriver.

Refer to section "SET UP" to detach the battery case from the motorized unit. Use the screwdriver to unscrew the 4 screws located at the corner of the case. Open the cover and remove the battery pack to expose the connection plug. To detach the battery connection wire, press the clip on the connector and then pull it out.

NOTE: Wrap the connector immediately with insulating tape in order to avoid short circuit caused by contact of both wire terminals.



TROUBLESHOOTING

Problem	Possible Cause	Solution
Press ON/OFF button to start but tube set does not rotate	Battery is running out.	Charge the battery case again. Replace the battery in remote control.
	Tube set is locked.	If the locking knob is installed, ensure it is unfastened to release the tube set.
	The hub axle inside the motorized unit is not completely secured by the 3 set screws around the round knob.	Use a hex wrench provided to tighten the 3 set screws.
Press ON/OFF button to start but stop after while	Motorized unit is overloaded.	Make sure wetted solar cover weight is within the limit. The maximum loading weight is 45KG (99lbs) including tube sets and a wet pool solar cover.
Battery case cannot be charged / recharged	Battery is damaged.	Contact dealer for battery replacement. WARNING! DO NOT open the battery case and replace the battery by yourself. This could result in severe or fatal injuries and the warranty will be voided as a result.
	Adaptor jack is not well connected.	Ensure the jack is completely inserted inside the port of the battery case.
	External adaptor is out of order.	Contact dealer for replacement. WARNING! Using the wrong external adaptor will damage the battery and void the warranty as a result.
Making noise during operation	Generated by constant rubbing between the metal bar of hub and interior of the round chamber (on top of frame of "#1" & "#2" where the metal bar goes through).	Apply plastic-compatible grease on the connecting point between the hub metal bar and round chamber.

Environmental Programmes, WEEE European Directive



Please respect the European Union regulations and help to protect the environment. Return non-working electrical equipment to a facility appointed by your municipality that properly recycles electrical and electronic equipment. Do not dispose them in unsorted waste bins. For items containing removable batteries, remove batteries before disposing of the product.



© 2023 Kokido Development Ltd.
All rights reserved. No part of this document may be reproduced or transmitted in any form or by any means, electronic, mechanical, photocopying, recording, or otherwise, without prior written permission of Kokido Development Ltd. (L-23010027)

If soft copy of this instruction manual is required, please contact our customer service by email: customerservice@kokido.com

SAVE THESE INSTRUCTIONS