

# Sanispeed



7 m  
70 m



## PRODUCT BENEFITS

- Pump suitable for commercial kitchen installation
- Low activation level
- Compatible with water softeners

## CONNECTIONS

← Discharge diameter ext. : 32 mm

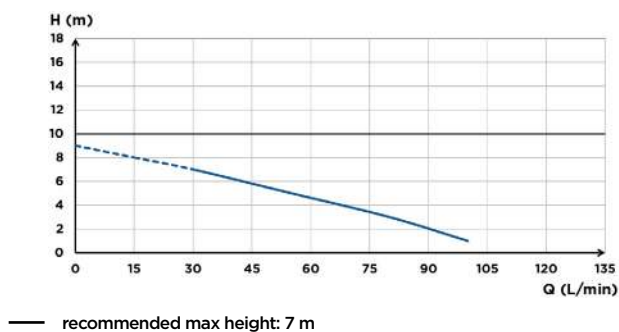
→ External inlet diameter : 40 mm



## PACK CONTAINS

non-return valve, connectors, activated carbon filter included to neutralise odours

## CURVE



## TECHNICAL FEATURES

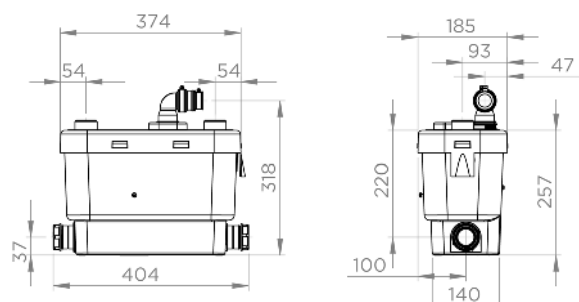
Number of inlets 4	4
External inlet diameter	40 mm
Discharge diameter ext.	32 mm
Max. incoming temperature	75 °C Intermittently (max. 5 min)
Min. shower tray height	150 mm
Activation level	95 mm
Voltage / Frequency	220-240 V / 50-60 Hz
Motor power	400 W
IP Rating	IP44
Electrical class	I
Noise level	42 dB(A)
<b>Identification and logistics</b>	
Gross weight	7 kg
EAN code	3308811579010
Product code	<b>SSPSTD</b>

## OPTIONAL

Sanialarm  
3308810042799  
**ALARM**  
See p. 27



## DIMENSIONS





5 m  
50 m



## PRODUCT BENEFITS

- Pump suitable for installing in a kitchen
- Low activation level
- Activated carbon filter included

## CONNECTIONS

← Discharge diameter ext. : 32 mm

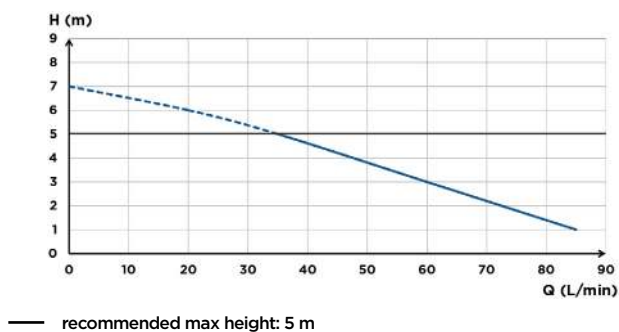
→ External inlet diameter : 40 mm



## PACK CONTAINS

Non-return valve, connectors, activated carbon filter included to neutralise odours

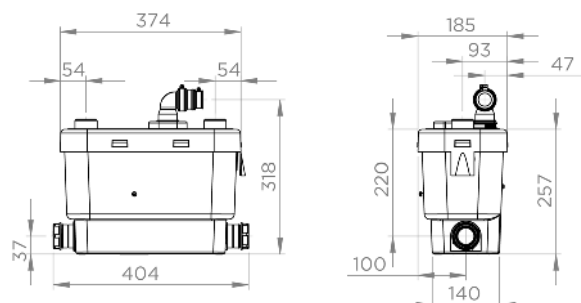
## CURVE



## TECHNICAL FEATURES

Number of inlets	4
External inlet diameter	40 mm
Discharge diameter ext.	32 mm
Max. incoming temperature	60 °C intermittently (max. 5 min)
Min. shower tray height	150 mm
Activation level	95 mm
Voltage / Frequency	220-240 V / 50-60 Hz
Motor power	400 W
IP Rating	IP44
Electrical class	I
Noise level	42 dB(A)
<b>Identification and logistics</b>	
Gross weight	6.4 kg
EAN code	3308811599018
Product code	<b>SVSTD</b>

## DIMENSIONS



# Sanishower



4 m  
40 m



## PRODUCT BENEFITS

- Pump suitable for standard shower tray
- Aesthetic design for discreet installation
- Low activation level

## CONNECTIONS

← Discharge diameter ext. : 32 mm

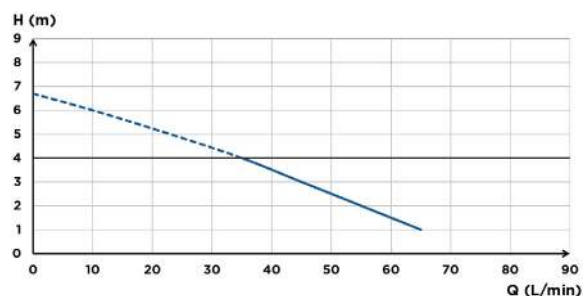
→ External inlet diameter : 40 mm



## PACK CONTAINS

non-return valve, connectors, activated carbon filter included to neutralise odours.

## CURVE

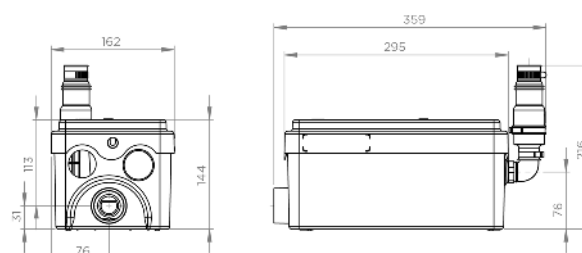


— recommended max height: 5 m

## TECHNICAL FEATURES

Number of inlets	2
External inlet diameter	40 mm
Discharge diameter ext.	32 mm
Max. incoming temperature	35 °C
Min. shower tray height	120 mm
Activation level	60 mm
Voltage / Frequency	220-240 V / 50-60 Hz
Motor power	250 W
IP Rating	IP44
Electrical class	I
Noise level	46 dB(A)
<b>Identification and logistics</b>	
Gross weight	4.6 kg
EAN code	3308811598011
Product code	<b>D2STD</b>

## DIMENSIONS





3 m  
30 m



## PRODUCT BENEFITS

- Wireless communication between pump and waste
- Easy maintenance: removable and cleanable hair drain
- Simple maintenance: replaceable detection module

## FUNCTIONING PRINCIPLES

The water entering the gully automatically activates the pump using an internal drain detection system. The water is then sucked up and pumped towards the main pipe.

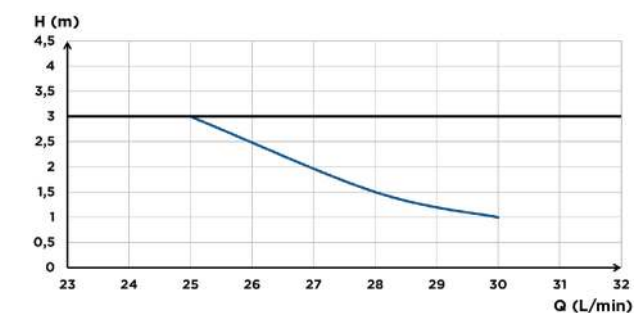
## PACK CONTAINS

pump and waste, non-return valve, floor fixings, 3 m steel spiral hose

## TECHNICAL FEATURES

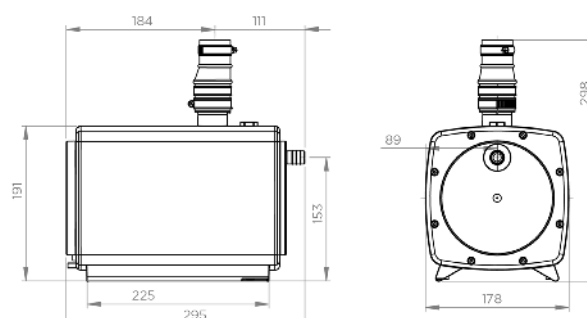
Number of inlets	1			
External inlet diameter	16 mm			
Discharge diameter ext.	32 mm			
Max. incoming temperature	35 °C			
Voltage / Frequency	220-240 V / 50-60 Hz			
Motor power	400 W			
IP Rating	IP44			
Electrical class	I			
Identification and logistics				
Gross weight	8 kg			8.5 kg
EAN code	3308815076232	3308815076249	3308815076164	3308815076256
Product code	HIFLOOR1	HIFLOOR2	HIFLOOR3	HIFLOOR4

## CURVE



— recommended max height: 3 m

## DIMENSIONS



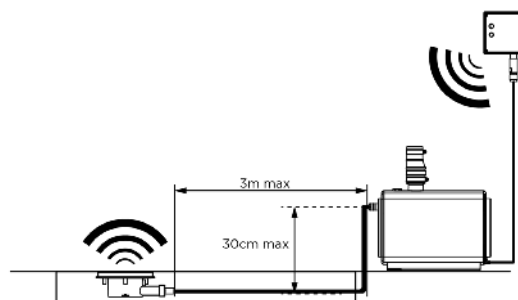
## CONNECTIONS

← Discharge diameter ext. : 32 mm

→ External inlet diameter : 16 mm

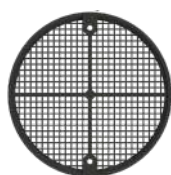


## INSTALLATION DIAGRAM

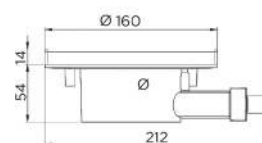


### Sanifloor+ 1

For tiled floors

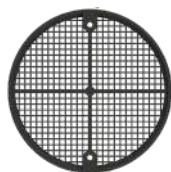


Removable hair drain

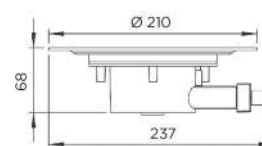


### Sanifloor+ 2

For vinyl floors



Removable hair drain

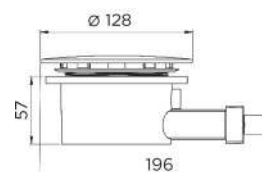


### Sanifloor+ 3

For shower trays

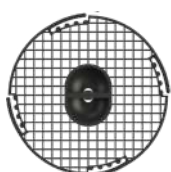


Removable hair drain



### Sanifloor+ 4

For Wedi® former for tiling



Removable hair drain

