

ResidiaJet

Single jet water meter with
modular register
and communication module option



Main Characteristics

DN 15 - 20

Single jet dry dial meter with magnetic coupling
Magnetic transmission
Suitable up to 50 °C as a cold water meter
Suitable from 30 °C to 90 °C as a warm water meter
Insensitive to upstream disruptive elements
355° rotating register
High resistance to water impurities
AMR pre-equipped for pulse or radio interface
Available with non return valve

Special features

Protection against external magnetic fields in accordance with EN 14 154, but over the whole measuring range

Modular register; prepared to take an electronic communication module (e.g. M-Bus)

Option Factory fitted with an electronic communication module

Residia-M M-Bus module for systems in accordance with EN 13757-3 (IEC 870/EN 1434-3)

Residia-P Pulse module for digital pulses (e.g. for remote counting)

Legibility

The display on 8 drums (5 for m³, 3 for litres) and 1 pointer ensures perfect readability. The lowest resolution is 0.05 litres. The dial has a central disc whose rotation indicates the water flow. This indicator can be used to reveal a downstream leak.

The ResidiaJet water meter operates in horizontal position and its dry dial can rotate up to 355°. The dial can therefore be easily read under all conditions of use.

Approvals

EC type-examination certificate

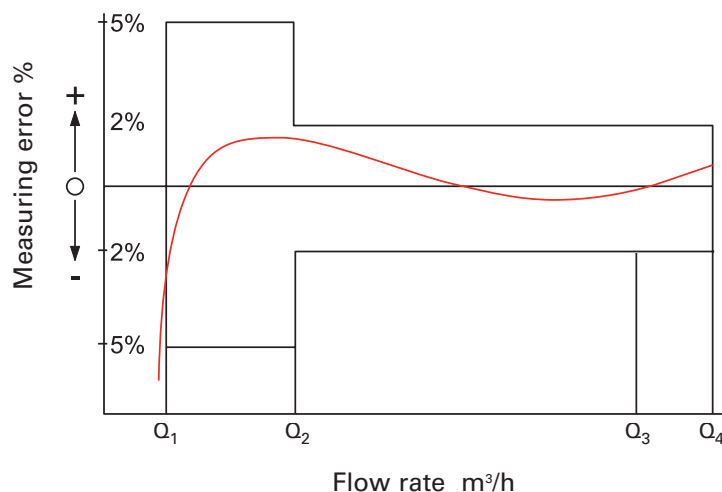
in conformity with

- 2014/32/EU (MID)
- OIML R49:2013
- EN 14154:2005+A2:2011
- ISO 4064:2014

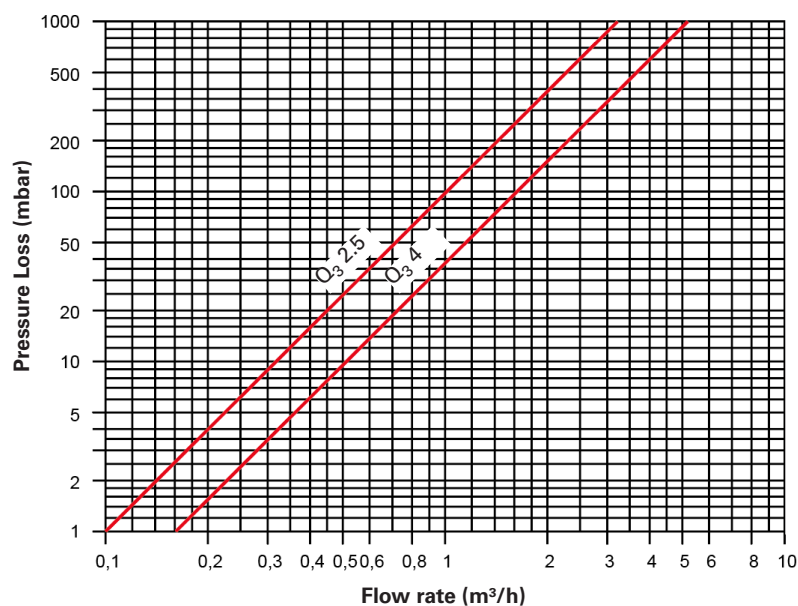
DE-12-MI001-PTB013 (Q₃ 2.5)

DE-16-MI001-PTB008 (Q₃ 4)

Typical Accuracy Curve



Typical Head Loss Curve



Technical characteristics

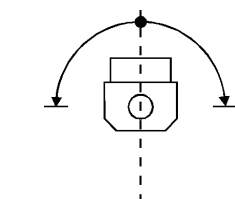
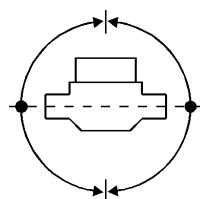
Metrological characteristics

Nominal Size	2.5 m³/h				4 m³/h			
Temperature Range	0.1 °C to 50 °C		30 °C to 90 °C		0.1 °C to 50 °C		30 °C to 90 °C	
Installation Position	Horizontal ¹⁾	Vertical	Horizontal ¹⁾	Vertical	Horizontal ¹⁾	Vertical	Horizontal ¹⁾	Vertical
Flowrate Range:								
Q ₃ /Q ₁	80 ²⁾	40	80 ²⁾	40	80 ²⁾	40	80 ²⁾	40
Q ₂ /Q ₁	1,6							
Q ₁	0.025 m³/h	0.063 m³/h	0.025 m³/h	0.063 m³/h	0.040 m³/h	0.100 m³/h	0.040 m³/h	0.100 m³/h
Q ₂	0.040 m³/h	0.1 m³/h	0.040 m³/h	0.1 m³/h	0.064 m³/h	0.160 m³/h	0.064 m³/h	0.160 m³/h
Q ₃	2.5 m³/h				4 m³/h			
Q ₄	3.125 m³/h				5 m³/h			
Accuracy Class	± 2% (Q ₂ ≤ Q ≤ Q ₄) for water temperatures ≤ 30 °C ± 3% (Q ₂ ≤ Q ≤ Q ₄) for water temperatures > 30 °C ± 5% (Q ₁ ≤ Q ≤ Q ₂)							
Pressure Range	0.3 bar (0.03 MPa) to 16 bar (1.6 MPa)							
Pressure Loss Class ΔP	0.63 bar (at Q ₃)							
Stream pofile sensitivity	U0D0							
Environmental Class	O							
Mechanical Environmental Conditions	M2							
Climatic Environmental Conditions	5 °C to 70 °C							
Electromagnetic Conditions	E2							

1) no top down installation

2) Also available in other ratios

Permissible installation position



Register max. 90° to the side
(not the overhead position)

Metrological performance up to R125 for Q_3 2.5 and R100 for Q_3 4 is achieved only with horizontal installation, register upwards. In vertical installation only R40.

Installation position optional, except overhead position

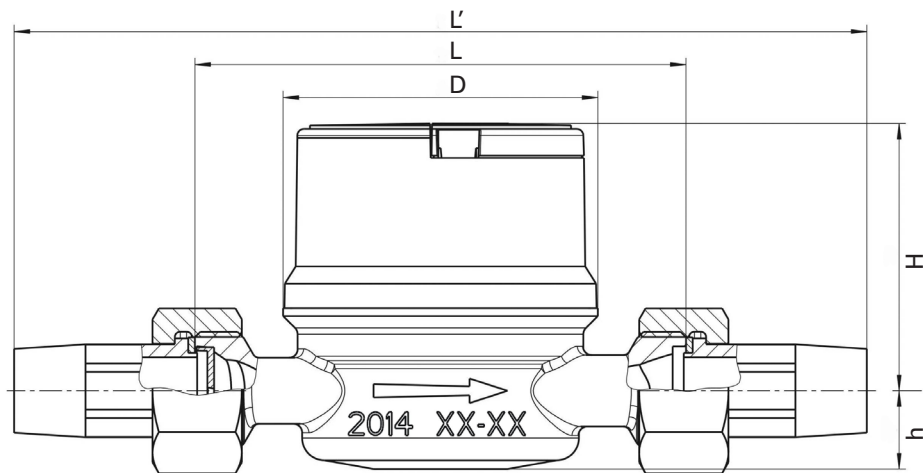
Meter head can be aligned for best readout position

Sizes and weight

Nominal Size	DN	mm	15					20
Length	L	mm	80	110	115		130	130 ¹⁾
Length with connectors	L'	mm	159	189	194	212	209	227
Width	D	mm	70	70	70		70	70
Total height	H	mm	60	60	60		60	60
Height to pipe axis	h	mm	17.5	17.5	17.5		17.5	17.5
Piping dimension		inch	R½"	R½"	R½"		R½"	R¾"
Tail	Diameter		G¾"B	G¾"B	G¾"B	G7/8" x ¾"	G¾"B	G1"
Weight		g	0.41	0.45	0.47		0.48	0.50

1) Also available in 115 mm

Dimensions



qualityaustria
Succeed with Quality

Certified according to ISO 9001
Quality Management System Quality Austria Reg.no. 3496/0



UK & Ireland Enquiries

Sensus UK Systems Ltd, 3 Lindenwood Crockford Lane, Chineham Business Park
Basingstoke RG24 8QY UK
T: +44 (0) 1256 372800 F: +44 (0) 1256 707203 Email: info.gb@xylemnc.com www.sensus.com

International Enquiries

Sensus GmbH Ludwigshafen Industriestrasse 16, 67063 Ludwigshafen, Germany
T: +49 (0) 621-6904-0 F: +49 (0) 621-6904-1409 Email: info.int@xylemnc.com www.sensus.com