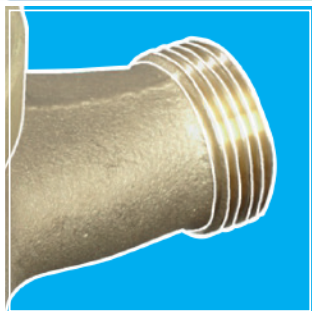


MTW-VM Flow sensor



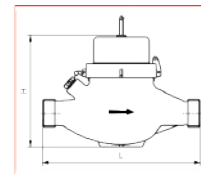
MID approved

MTW-VM Flow sensor

TECHNICAL DATA

PRODUCT DESCRIPTION

- MTW-W. VM = Multi-jet dry-rotor volume measuring unit for warm water (up to max. 90 °C)
 MTH-W. VM = Multi-jet dry-rotor volume measuring unit for hot water (up to max. 120 °C)
 ...-V = Multi-jet standard meter
 ...-K = Multi-jet contact meter
 ...-HW. = Meter for horizontal piping
 ...-OW. = Measuring insert



PERFORMANCE CHARACTERISTICS:

- Encapsulated 5- or 8-digit totalizer with magnetic transmission, pivotable
- Tamper-proof due to magnetic shielding cover
- Combined two-point-toe-bearing (hard metal-sapphire)
- Independent of water conductivity
- Bodies for horizontal, ascending and downflow piping
- Bodies in natural brass, painted or coated
- Labelling of the dial faces, stick-on labels, name plates and protective covers on customer request
- Maximum pressure load 1.6 MPa
- Conform to the requirements of MID as well as EN 1434.

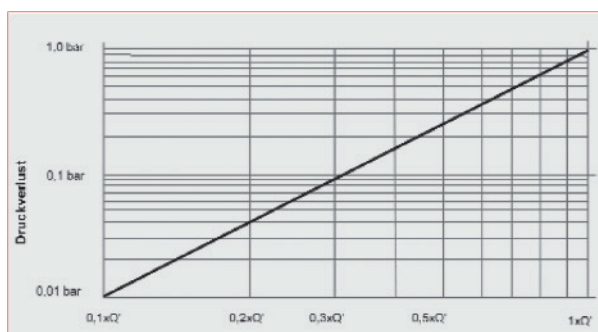
REED CONTACT:

- Standard pulse valency 10 litres/pulse
- Standard cable length 2 m
- Additional pulse valencies and cable lengths on request
- Direct switching voltage up to 200 V
- Switching current 500 mA, switching time 0.5 ms
- Transition resistance 150 mOhm
- Capacity 0.2 pF

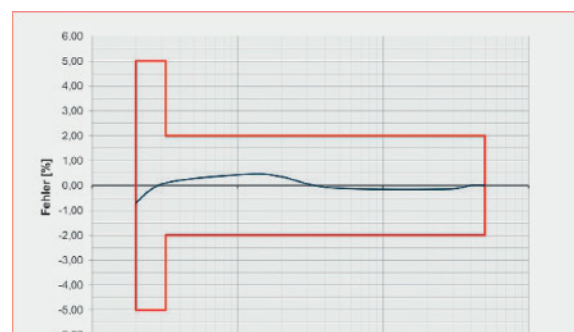
Overall length L [mm]	165	190	260	260	300
Nominal flow Q3 [mid]	1.5	2.5	3.5	6	10
Nominal flow Qn [EWG]	16	16	16	16	16
Nominal width [mm]	15	20	25	32	40
Start about [l/h]**	13	13	23	23	45
Flow Q' at 1 bar pressure loss [l/h]	3500	5600	12500	12500	24000
Connecting thread	3/4"	1"	1 1/4"	1 1/2"	2"
Height H about [mm]	94	94	112	112	130
Weight about [Kg]	1.6	1.7	2.5	2.5	5
Achievable metrological class:					
ETK/ETW [MID]	50:1	50:1	50:1	50:1	50:1

* Additional overall lengths and metrological classes on request

** Typical values for horizontal mounting position



Pressure loss graph



Typical accuracy curve