

## K

## Circular duct fans



- Completely airtight, sealed casing (Class C)
- Suitable for applications outdoors and in wet rooms
- Includes mounting bracket for easy installation
- Speed-controllable
- Vibration-free connection to the duct system with FK fast clamp (accessories)
- Integral thermal contacts

**Casing**

Airtight, seamed casing made from galvanised steel.  
Leakage rate compliant with tightness class C, according to EN 12237:2003. Duct connections min. 25 mm long.

**Motor**

Speed-controllable external rotor motors.

**Impeller geometry**

Radial impeller with backward curved blades.

**Power control**

Speed-controllable via stepless thyristor or 5-step transformer.

**Motor protection**

Integrated thermal contacts with manual reset in accordance with EN60335-2-80 (sizes 100 M and 125 M have integrated thermal protection).

You can find more information in our online catalogue on [www.systemair.com](http://www.systemair.com)

**Accessories**

**CB**  
Duct heater  
Page 369



**CBM**  
Duct heater  
Page 370



**FFR**  
Filter cassette  
Page 367



**FGR**  
Filter cassette  
Page 366



**FK**  
Fast clamp  
Page 364



**IGC-LI**  
Intake grid  
Page 364



**IGK**  
Intake grid  
Page 365



**LDC**  
Silencer  
Page 368



**RSK**  
Back draft damper  
Page 364



**SG**  
Protection guard  
Page 365



**VK**  
Louvre shutter  
Page 365



**VKK**  
Back draft damper  
Page 366



**VBC**  
Water heating battery  
Page 371



**VBF**  
Water heating battery  
Page 372



**CWK**  
Water cooling battery  
Page 374

**Electrical accessories**

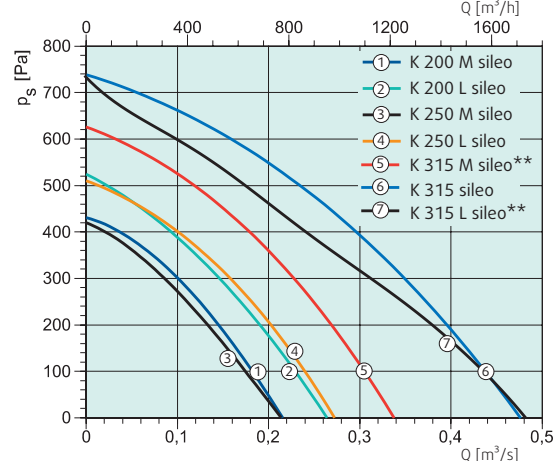
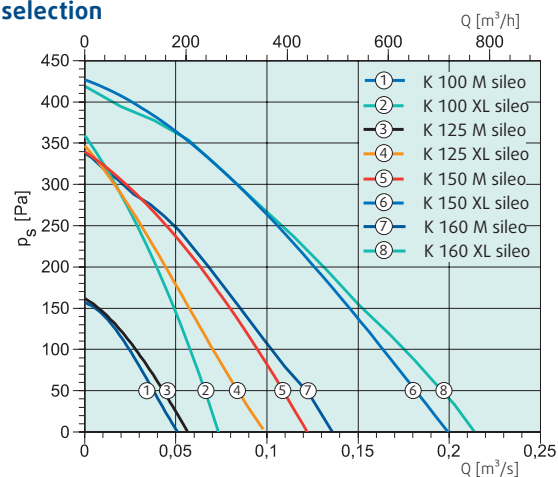
**RE / REU**  
Speed control  
Page 332



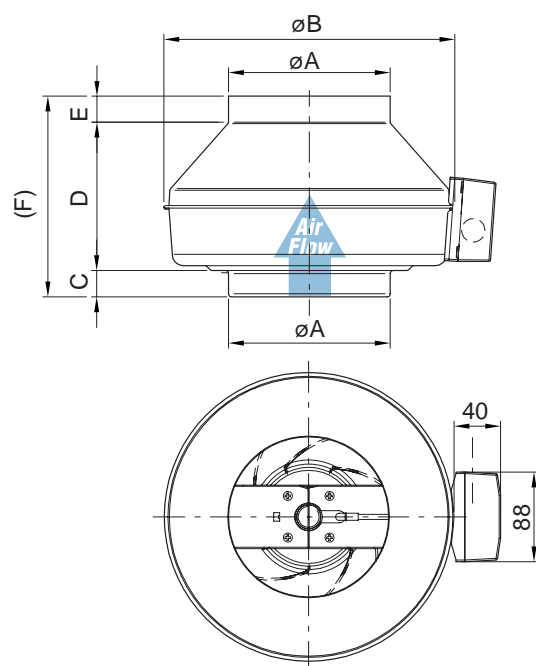
**REE**  
Speed control  
Page 333



**REV**  
On/off switch  
Page 360

**Quick selection**

## Dimensions



K	$\varnothing A$	$\varnothing B$	C	D	E	(F)
K 100 M sileo	99	218	26	166	26	218
K 100 XL sileo	99	246	26	161	26	213
K 125 M sileo	124	218	27	142	27	196
K 125 XL sileo	124	246	26	151	26	203
K 150 M sileo	149	286	25	152	25	202
K 150 XL sileo	149	336	29	171	26	226
K 160 M sileo	159	286	25	147	26	198
K 160 XL sileo	159	336	29	166	26	221
K 200 M sileo	199	336	30	148	27	205
K 200 L sileo	199	336	30	174	27	231
K 250 M sileo	249	336	30.5	119.5	27	177
K 250 L sileo	249	336	30.5	144.5	27	202
K 315 sileo	314	408	32.5	160.5	27	220
K 315 M sileo**	314	408	32.5	160.5	27	220
K 315 L sileo**	314	408	38	161	27	225

## Technical data

K		K 100 M sileo	K 100 XL sileo	K 125 M sileo	K 125 XL sileo	K 150 M sileo	K 150 XL sileo	K 160 M sileo	K 160 XL sileo
Art. no.		1001	25360	1002	25361	25362	25363	25364	25365
Voltage	V	1x230	1x230	1x230	1x230	1x230	1x230	1x230	1x230
Frequency	Hz	50	50	50	50	50	50	50	50
Input power (P1)	W	30.7	52.1	28.2	52.7	53.3	100	53	102
Current	A	0.177	0.227	0.164	0.229	0.232	0.443	0.231	0.447
Max. temperature of transported air	°C	70	70	70	70	70	70	70	70
* when speed-controlled	°C	70	70	70	70	70	70	70	70
Sound pressure level (1 m)*	dB(A)	29.5	41.2	30.2	40.2	36.2	43.6	34.4	41.8
Weight	kg	2.3	3	2.3	2.9	3.3	4.1	3.3	4
Insulation class		B	B	B	B	B	F	B	F
Capacitor	µF	-	1.5	-	1.5	1.5	2.5	1.5	2.5
Motor protection <sup>(1)</sup>		Integral	Integral	Integral	Integral	Integral	Integral	Integral	Integral
Speed control, five-step <sup>(1)</sup>	Transf.	RE 1.5	RE 1.5	RE 1.5	RE 1.5	RE 1.5	RE 1.5	RE 1.5	RE 1.5
Speed control, five-step high/low <sup>(1)</sup>	Transf.	REU 1.5	REU 1.5	REU 1.5	REU 1.5	REU 1.5	REU 1.5	REU 1.5	REU 1.5
Speed control, stepless <sup>(1)</sup>	electr.	REE 1	REE 1	REE 1	REE 1	REE 1	REE 1	REE 1	REE 1

K		K 200 M sileo	K 200 L sileo	K 250 M sileo	K 250 L sileo	K 315 sileo	K 315 M sileo**	K 315 L sileo**
Art. no.		25366	19510	25367	19512	27424	27758	19514
Voltage	V	1x230	1x230	1x230	1x230	1x230	1x230	1x230
Frequency	Hz	50	50	50	50	50	50	50
Input power (P1)	W	102	145	103	147	231	201	318
Current	A	0.442	0.631	0.449	0.632	1.01	0.882	1.39
Max. temperature of transported air	°C	70	70	70	70	70	70	57.4
* when speed-controlled	°C	70	70	70	70	70	70	52.4
Sound pressure level (1 m)*	dB(A)	40.7	43.8	38.8	42.8	38.7	43.6	45.7
Weight	kg	4.1	4.8	3.9	4.6	6.6	5.5	6.6
Insulation class		F	F	F	F	F	F	F
Capacitor	µF	2.5	3.5	2.5	3.5	5	5	7
Motor protection <sup>(1)</sup>		Integral	Integral	Integral	Integral	Integral	Integral	Integral
Speed control, five-step <sup>(1)</sup>	Transf.	RE 1.5	RE 1.5	RE 1.5	RE 1.5	RE 1.5	RE 1.5	RE 1.5
Speed control, five-step high/low <sup>(1)</sup>	Transf.	REU 1.5	REU 1.5	REU 1.5	REU 1.5	REU 1.5	REU 1.5	REU 1.5
Speed control, stepless <sup>(1)</sup>	electr.	REE 1	REE 1	REE 1	REE 1	REE 2	REE 2	REE 2

(\*) Free field conditions

(\*\*) Only for use outside the EEA (European Economic Area), see Ecodesign regulation 327/2011

(1) Systemair recommendation.