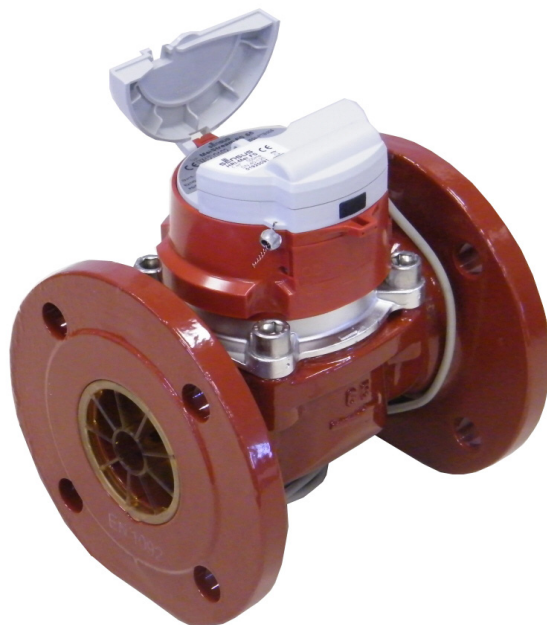


MeiStream FS

Flow sensor for
heat meters
DN 50...100



Special features

The MeiStream flow sensor combines the high reliability and measurement accuracy of the Woltman WP meter with the advantages of the Woltman WS meter in the lower measuring range. This combination creates an excellent new flow sensor with a MID approval after MI004 or EN 1434 in the accuracy class 2.

Volume pulses are generated by the interface HRI-Mei FS. This interface transfers volume pulses with programmable pulse values to the heating or cooling calculator. Possible reverse flows are compensated.

Centerpiece of the MeiStream Flow Sensor is a newly designed impeller with spherical hub that floats freely. Once the minimum flow rate is reached the impeller is lifted from the radial bearing and moves axially in a friction-free position without further loading the bearing pins. This floating is maintained up to a high levels of flow ensuring consistency. The design of the impeller is the result of several years of research, development and testing. As a result of this work an impeller has been developed that works optimally over the entire flow rate range and provides excellent metrological performance, secure profit and increased service life.

Unlike the Woltman-WS flow sensor the MeiStream Flow Sensor can also be installed in the vertical position. This essential feature is achieved by the three-dimensional hydrodynamic balance of the impeller. This permits quick and easy installation even in narrow locations. For compatibility with existing measuring points the MeiStream flow sensor is available in the short (WP) and long (WS) lengths.

Application

- Flow sensor for heat meters for commercial and light industrial use.
- For measurement of hot process water up to 90 °C
- For high permanent flow rates such as generated by pumps, as well as for the measurement of low flow rates in off-peak periods
- Installation in horizontal and vertical pipe lines

Approval mark and conformity marking

CE MXX* 0102 DE-12-MI004-PTB006

* year of production

Performance data

Nominal diameter		DN	50	65	80	100
	Max. Peak Flow	m³/h	50	60	120	140
Q _s	Overload Flowrate	m³/h	50	50	120	120
Q _p	Continuous Flow	m³/h	25	25	60	60
Q _i	Minimum Flow	m³/h	0.5	0.5	1.2	1.2
Q _p / Q _i	Ratio horizontal		1/50	1/50	1/50	1/50
Q _p / Q _i	Ratio vertical		1/25	1/25	1/25	1/25

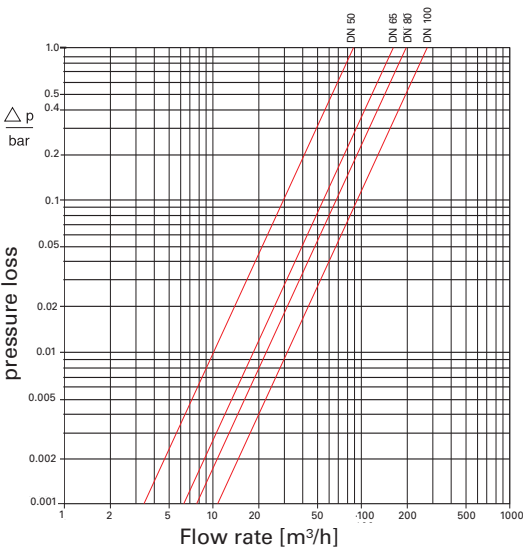
The values Q_s, Q_p and Q_i correspond to EN 1434

Dial

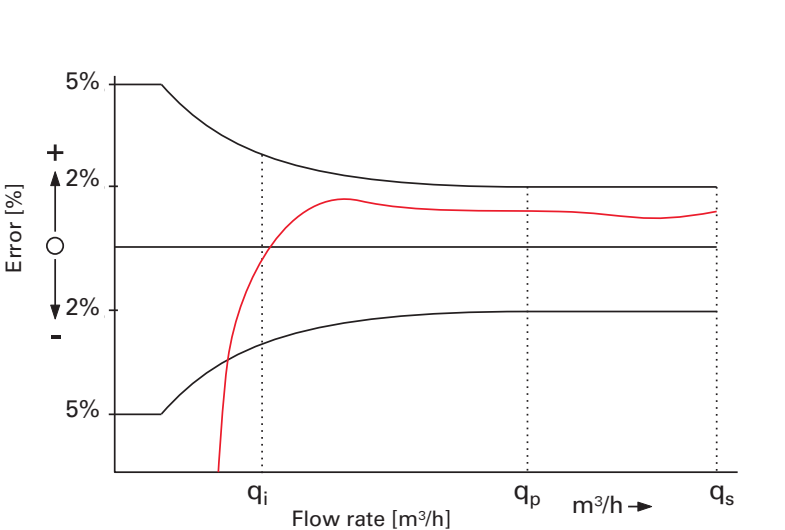


Nominal diameter DN	Smallest reading m³	Max. reading m³
50 ... 100	0,0005	999.999,999

Typical head loss curve




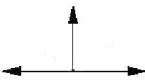
Typical error curve



Upstream straight pipe

- No straight pipe at inlet or outlet required (U0D0 acc. EN 14154)
- No abrupt restrictions directly downstream of the meter

Installation

Pipe	horizontal vertical	
Meter head	upwards sideways	

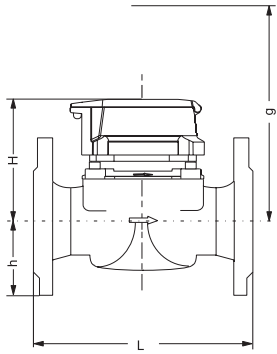
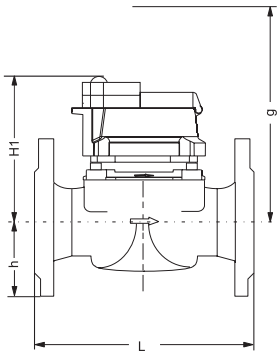
Materials

Body	Cast iron
Measuring element	Plastic
Rotor	Plastic
We also use the following materials	Brass Stainless steel



Dimensions and weights

Nominal diameter			DN	50	50	65	65	80	80	100	100
Dimensions	Overall length	L	mm	200	270	200	300	225	300	250	360
	Height	H	mm	120	120	120	120	150	150	150	150
	Height with HRI-Mei FS	H1		150	150	150	150	180	180	180	180
		h	mm	73	73	85	85	95	95	105	105
	Dismantling height	g	mm	200	200	200	200	270	270	270	270
Weight			kg	7.8	9.6	10.1	12.0	14.2	16.3	18.2	20.2

Dimension drawings




Pulse values

Pulser		Pulse value DN 50 ... 100
HRI-Mei FS		0.01; 0.025; 0.1; 0.25 m³
OD 02 OD 04		0.001 m³ 0.01 m³

Technical data HRI-Mei FS

Switch type: Class OC acc. EN 1434-2 (open Drain) Maximum voltage: 28 Volt Maximum power: 20 mA Pulse length: ≥ 100 ms Pulse pause: ≥ 100 ms On position: ≥ 0,3 V at 0,1 mA Off position: ≥ 6 MΩ Cable length: 3 m Connection: white = plus, grey = minus	Protection class: IP 68 Power supply: Lithium batteries not replaceable Battery life: 6 years operation + 1 year storage Battery temperature: - 10 + 60 °C Storage temperature: - 20 + 60 °C Humidity: 100%
--	--





qualityaustria

Succeed with Quality

Certified according to ISO 9001

Quality Management System Quality Austria Reg.no. 3496/0

UK & Ireland Enquiries

Sensus UK Systems Ltd, International House, Southampton International Business Park,

George Curl Way, Southampton SO18 2RZ UK

T: +44 (0) 1794 526100 F: +44 (0) 1794 526101 Email: info.gb@sensus.com www.sensus.com

International Enquiries

Sensus GmbH Hannover, Meineckestraße 10, D-30880 Laatzen Germany

T: +49 (0) 5102 74-0 F: +49 (0) 5102 74-3341 Email: info.int@sensus.com www.sensus.com