

WB- Dynamic

Turbine Angle Type Meter
for cold water up to 50 °C
DN 80, DN 100, DN 150



Special Features

- Interchangeable measuring element
- Performance data better than class B
- Sealed register water proof (IP 68)
- Sealed register may be rotated through 360° without breaking meter seal
- Not affected by external magnetic fields
- Maximum corrosion protection by powder coating

Application

- Measuring of well water up to 50 °C
- Measuring of conveying volumes in wide flow ranges
- Instead of 90° pipe elbow
- For narrow well pits
- Maximum working pressure PN 16
- For industrial, non-commercial use

Options

- Prepared for pulser connection
- Pulser can be fitted without breaking the meter seal

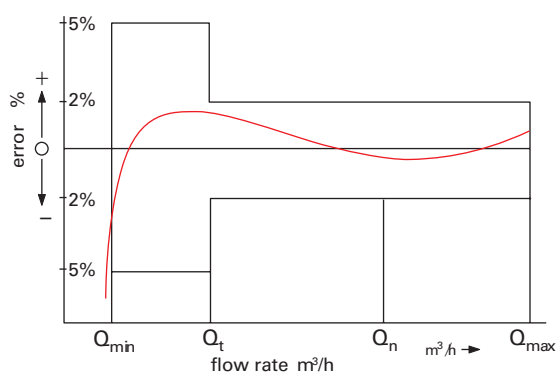
Materials

Body	Cast iron
Measuring element	Plastic
Rotor	Plastic
We also use the following materials	brass, stainless steel

Pulse Values

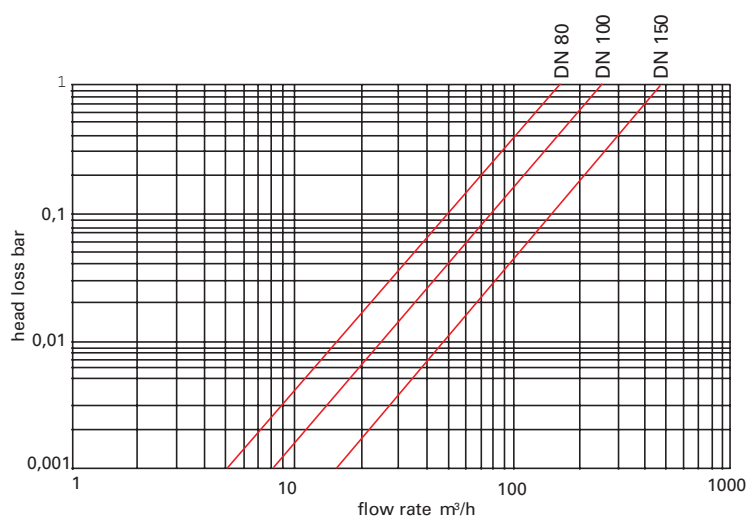
Pulser	DN 80 / DN 100 1 pulse $\hat{=}$... m ³	DN 150 1 pulse $\hat{=}$... m ³
RD 01	1.0 m ³ 0.1 m ³	10 m ³ 1.0 m ³
OD 01	0.001 m ³	0.010 m ³
OD 03	0.01 m ³	0.1 m ³

Typical Accuracy Curve

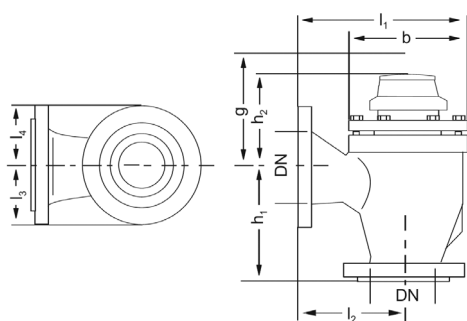


Q_{max} = maximum peak flow
 Q_n = continuous flow
 Q_t = transitional flow $\pm 2\%$
 Q_{min} = minimum flow $\pm 5\%$

Typical Head Loss Curve



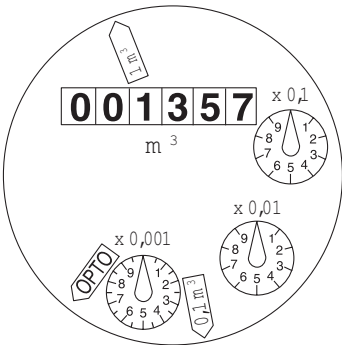
Dimension Picture



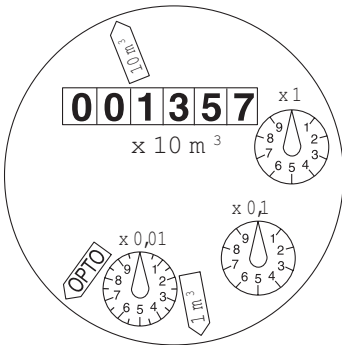
Dimensions and Weights

Nominal Diameter	DN	mm	80	100	150	
Size of meter	Q _n		40	60	150	
Old leg-length acc. to DIN 28537	l ₂ =h ₁	mm	180	200	250	
	b	mm	190	240	315	
	l ₁	mm	290	320	410	
	h ₂	mm	147	192	202	
	l ₃ =l ₄	mm	100	110	143	
Weight of meter		kg	23	33	56	
New leg-length acc. to DIN 28637	l ₂ =h ₁	mm	165	180	220	
	b	mm	190	240	315	
	l ₁	mm	275	300	380	
	h ₂	mm	147	192	202	
	l ₃ =l ₄	mm	100	110	143	
Weight of meter		kg	21.5	31	53.5	
Building height		g	mm	367	427	512

Dials



DN 80 / DN 100



DN 150

Available Design

		Order no.		
Diameter Nominal	DN	80	100	150
Size of Meter	Q _n	40	60	150
Nominal Pressure	PN [bar]	16	16	16
Leg Length acc. to DIN 28537 (old)	[mm]	L = 180, 82 93 51	L = 200, 82 93 53	L = 250, 82 93 55
Leg Length acc. to DIN 28637	[mm]	L = 165, 82 93 52	L=180, 82 93 54	---

Order Example

	Type
	Diameter nominal
	Working temperature
	Nominal pressure
WB-Dynamic, DN 80, 40/16, L = 165 mm	Leg length
drilled according to EN 1092 PN 16	Flange Drilling
82 93 52	Order no.



UK & Ireland Enquiries

Sensus UK Systems Ltd, 3 Lindenwood Crockford Lane, Chineham Business Park
Basingstoke RG24 8QY UK
T: +44 (0) 1256 372800 F: +44 (0) 1256 707203 Email: info.gb@xyleminc.com www.sensus.com

International Enquiries

Sensus GmbH Hannover, Meineckestraße 10, D-30880 Laatzen, Germany
T: +49 (0) 5102 74-0 F: +49 (0) 5102 74-3341 Email: info.int@xyleminc.com www.sensus.com