

Ref. : CA 3241.pas

Rev. : I

Date : 13/04/2016

Page : 1/1

# FLANGED TYPE AXIAL CHECK VALVE

## CA 3241

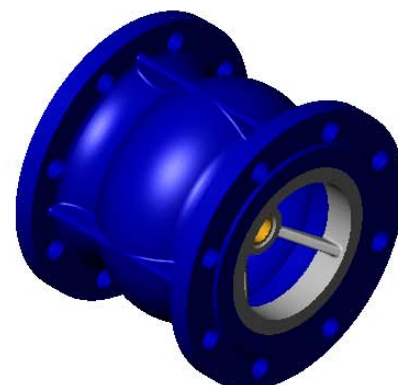


### APPLICATION

General uses: pumping, irrigation, industry, clean water.

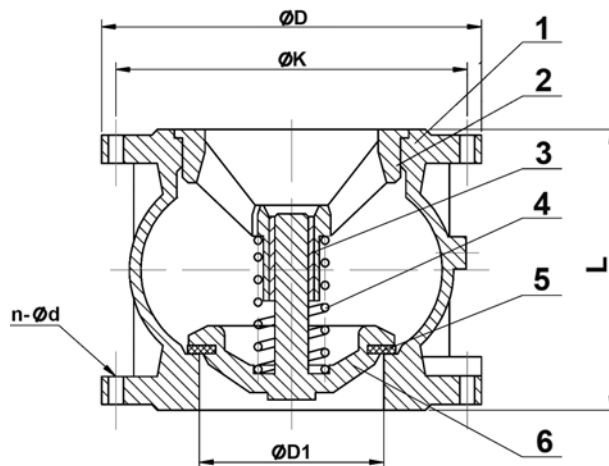
### GENERAL CHARACTERISTICS

From DN 50 to DN 300.  
Fabrication according to EN 12334.  
Excellent tightness.  
Low head loss.  
Extremely reliable.  
Excellent hydraulic result.  
Simplicity in mounting and use.



### CONSTRUCTION

6	1	Disc	Ductile iron EN-GJS-400-15	DIN: GGG40 ASTM: A536 65-45-12 BS: EN-JS1030
5	1	Seal	Nitril	
4	1	Spring	Stainless steel 316	
3	2	Guiding stem	F4	
2	1	Guide	Ductile iron EN-GJS-400-15	DIN: GGG40 ASTM: A536 65-45-12 BS: EN-JS1030
1	1	Body	Cast iron EN-GJL-250	DIN: GG25 ASTM: A48 class 40B BS: 1452 Grade 250
Pos.	Q-ty	Description	Material	



### DIMENSIONS

DN		L	Ø D	Ø K	Ø D1	n x Ø L	Weight (kg)
mm	inch						
50	2"	100	165	125	50	4 x 19	5,09
65	2 1/2"	120	185	145	65	4 x 19	7,85
80	3"	140	200	160	80	8 x 19	9,53
100	4"	170	220	180	105	8 x 19	13,2
125	5"	200	250	210	127	8 x 19	20,5
150	6"	230	285	240	145	8 x 23	29,6
200	8"	301	340	295	194	12 x 23	47,3
250	10"	370	405	355	245	12 x 26,5	68
300	12"	410	460	410	300	12 x 26,5	112

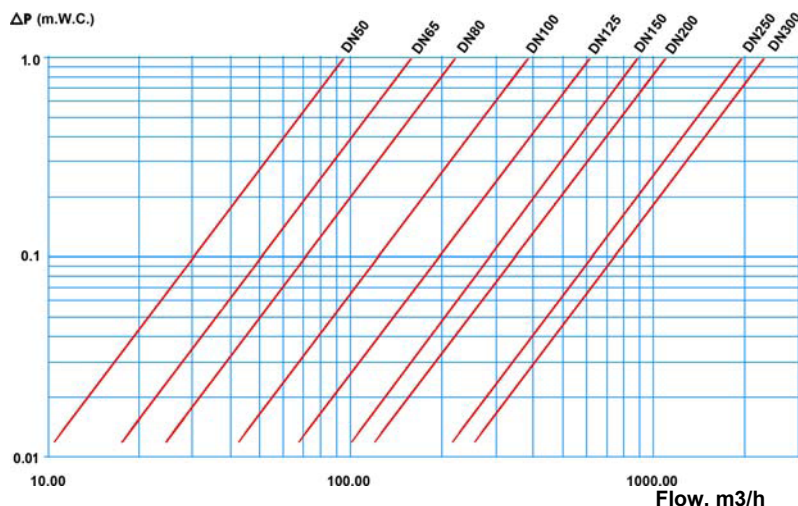
### WORKING CONDITIONS

Maximum working pressure : 16 bar.  
Maximum temperature : +80°C.

Pressure test according to standards  
EN 12266-1, DIN 3230, BS 6755 and ISO 5208 :  
Body : 24 bar.  
Seat : 17,6 bar.

### STANDARDS

Flanges drilled according to EN 1092-2 and  
DIN 2501/1 : ISO PN16. ASA 150 on request.



**TECOFI France** - 83, Rue Marcel Mérieux 69960 Corbas - FRANCE  
Tél. +33 (0) 4 72 79 05 79 - Fax +33 (0) 4 78 90 19 19 / +33 (0) 4 72 79 05 70  
Adresses e-mail : sales@tecofi.fr ; tecofi@tecofi.fr / Site web : [www.tecofi.fr](http://www.tecofi.fr)