

## Power HT-A 135-650 kW



- Aluminium-silicon exchanger with glass wool insulation: high efficiency and reliability and long life
- Low emissions pre-mixing burner
- Digital control panel with back-lighted LCD display and advanced electronics to manage single and cascade installations (flue system to install up to 2 boilers in cascade)
- Easy to transport and to install
- Included outdoor sensor
- Circulating pump not included inside the boiler

### Hydraulic system

Hydraulic connections on the rear side  
Sticking pump check system  
Flow and return NTC sensors  
Premixed low-emissions burner

### Thermoregulation system

Built-in climatic regulation  
(outdoor sensor included)  
Mixed zones systems  
(high and low temperatures)  
zone controllers as optional  
Cascade system installation option  
(up to 16 boilers)  
NTC sensor for DHW cylinder  
control option  
Heating and DHW scheduler  
integrated in the control panel

### Control system

Full electronic anti-frost device  
Electronic thermometer  
Flow over-temperature thermostat

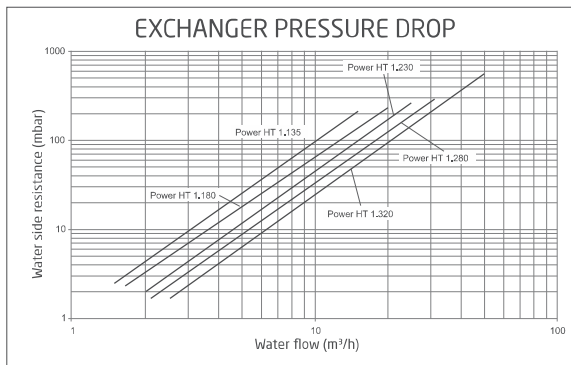
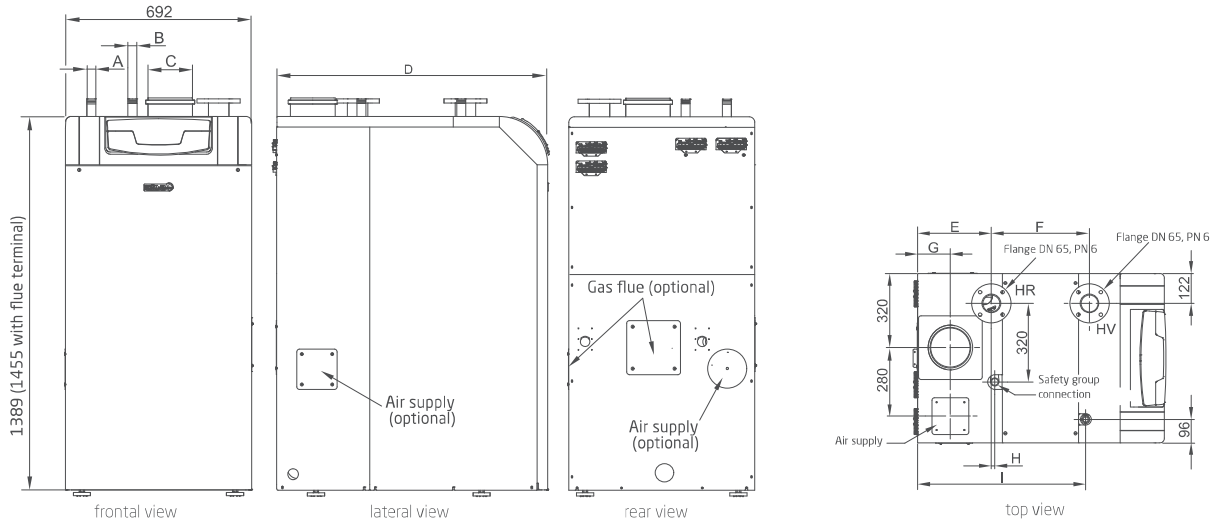
## Outputs from 135 to 650 kW

Power HT-A		1135	1180	1230	1280	1320	1430	1500	1650
Maximum heat input (heating)	kW	125	170	215	250	300	300	469	610
Minimum heat output	kW	20	28	35	42	48	48	95	122
Rated heat output (80/60°C) <i>Prated</i>	kW	121,6	165,8	210,1	254,5	294,3	294,3	459	595,7
Minimum heat output (80/60°C)	kW	19,2	26,8	33,5	40,2	47,1	47,1	93	119,2
Maximum heat output (50/30°C)	kW	133,1	181,3	229,6	278,1	322,1	322,1	496,6	644,8
Minimum heat output (50/30°C)	kW	21,3	29,8	51,2	62	63,2	63,2	102,8	131,5
Useful heat output at 30% of rated heat output and low temperature regime** <i>P<sub>u</sub></i>	kW	40,8	55,5	69,7	84,4	97,3	97,3	-	-
Efficiency <i>P<sub>h</sub></i> (lower calorific value) - Average temperature 70°C	%	97,3	97,5	97,9	98	98	98,2	98,3	98,5
Efficiency at 30% (lower calorific value) - Return temperature 30°C	%	108,8	108,8	105,4	105,6	105,7	105,9	105,8	105,7
Useful efficiency at rated heat output and high temperature regime* <i>η<sub>4</sub></i>	%	87,7	87,9	88	88,2	88,3	88,3	-	-
Useful efficiency at 30% of rated heat output and low temperature regime** <i>η<sub>L</sub></i>	%	98	98	97,4	97,5	97,4	97,5	-	-
Seasonal space heating energy efficiency <i>η<sub>s</sub></i>	%	93	93	93	93	93	93	93	93
NOx emissions	mg/kWh	38	38	39	39	39	36	< 56	< 56
Maximum pressure heating circuit	bar	6	6	6	6	6	6	6	6
Maximum inlet temperature heating circuit	°C	90	90	90	90	90	90	90	90
Heating temperature range	°C	25-80	25-80	25-80	25-80	25-80	25-80	25-80	25-80
Water content	l	29	34	38	45	53	72	84	106
Dual flue system	mm	160	160	200	200	200	250	250	250
Maximum flue mass flow rate	kg/s	0,057	0,077	0,097	0,118	0,136	0,189	0,22	0,286
Minimum flue mass flow rate	kg/s	0,009	0,013	0,016	0,019	0,022	0,039	0,046	0,059
Maximum flue temperature	°C	61	61	60	61	60	64	61	64
Dimensions (h x w x d)	mm	1455x692x1108	1455x692x1171	1455x692x1204	1455x692x1357	1525x692x1382	1525x692x1382	1525x692x1382	1525x692x1382
Net weight	kg	205	340	285	314	344	540	598	674
Gas type									
Power consumption	W	170	200	330	350	410	463	583	750
Auxiliary electrical power consumption - Full load <i>el<sub>max</sub></i>	kW	170	200	330	350	410	463	583	750
Auxiliary electrical power - Partial load <i>el<sub>min</sub></i>	kW	31	34	40	46	51	60	-	-

<sup>(2)</sup> In case of Grundfos Magna modulating pump installation a signal converter (230V / 0-10V KPM) must be ordered

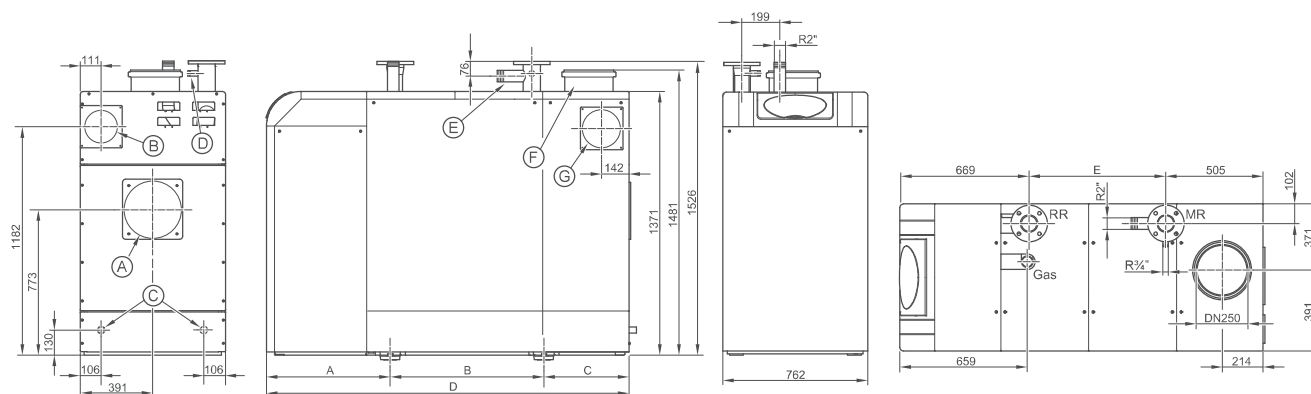
## Dimensions Power HT-A 135-320 kW

Power HT 1.135 - 1.320



Model	Power HT 1.135	Power HT 1.180	Power HT 1.230	Power HT 1.280	Power HT 1.320
A	R 1"	R 1½"	R 1½"	R 1½"	R 1½"
B	R 1"	R 1"	R 1¼"	R 1¼"	R 1¼"
C	160	160	200	200	200
D	1008	1008	1171	1264	1357
E	301	301	351	351	351
F	401	401	514	607	700
G	134	134	163	163	163
H	14	14	14	14	14
I	687	687	851	944	1037

## Dimensions Power HT-A 430-650 kW



Power HT-A		1.430	1.500	1.650
A	mm	642	642	642
B	mm	798	1009	1009
C	mm	442	540	540
D	mm	1882	2192	2192
E	mm	709	1018	1018
MR Heating system flow		Flange DN 80 PN 6		
RR Heating system return		Flange DN 80 PN 6		
Gas Gas inlet		R2" outer thread		
Ⓐ Rear flue outlet (optional)		DN 250		
Ⓑ Rear supply air connection		ø 160		
Ⓒ Condensate drain (on the right/on the left)		DN 32		
Ⓓ Safety group connection		R3/4" outer thread		
Ⓔ Safety valve connection		R2" outer thread		
Ⓕ Flue outlet		DN 250		
Ⓖ Side supply air connection (optional)		ø 160		

