

KT

Rectangular duct fans



- Swing-out motor impeller for easy service
- Speed-controllable
- Integral thermal contacts
- Can be installed in any position
- Maintenance-free and reliable

Casing

Casing manufactured from galvanised sheet steel. Motors and impellers are mounted in the cover to make cleaning and maintenance easier.

Motor

Voltage controllable external rotor motors.

Impeller geometry

Centrifugal impeller with forwarding curved blades.

Output control

Speed-controllable via voltage reduction using a transformer.

Motor protection

Integrated thermal contacts with cables for connection to a motor protection switching device.

You can find more information in our online catalogue on www.systemair.com

Accessories



DS
Flex. connection
Page 375



FFK
Filter cassette
Page 377



GFL
Counter flange
Page 375



LDR
Silencer
Page 376



SRK
Damper
Page 375



VK
Louvre shutter
Page 365



PGK
Duct cooler
Page 380



DXRE
Duct cooler
Page 381



RB
Duct heater
Page 378



RBM
Duct heater
Page 379



VBR
Water heating battery
Page 382

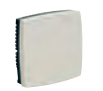
Electrical accessories



STD 16
Motor protection
Page 349



REPT
Digital regulator
Page 347



RT
Room thermostat
Page 355



RTRD
Speed control
Page 335

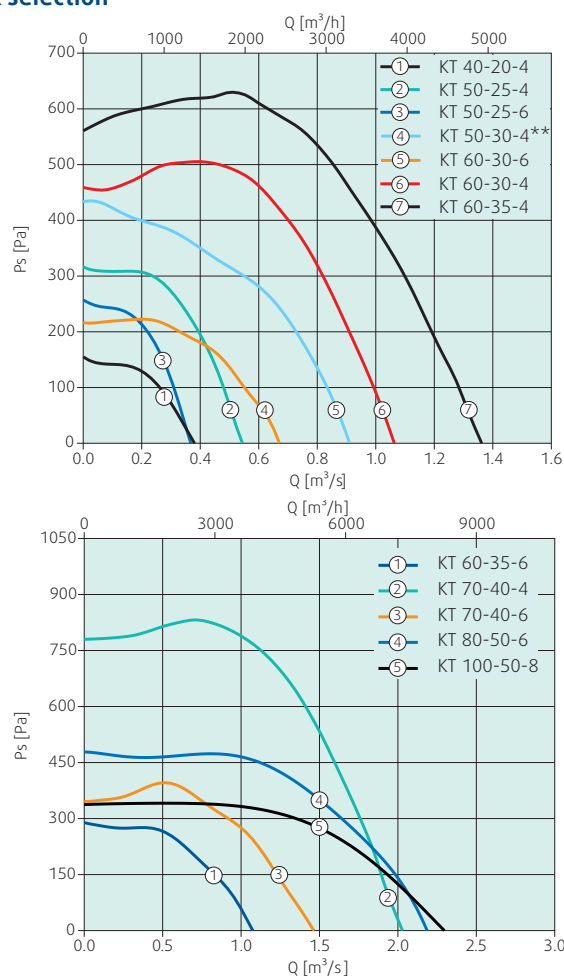


RTRDU
Speed control
Page 334

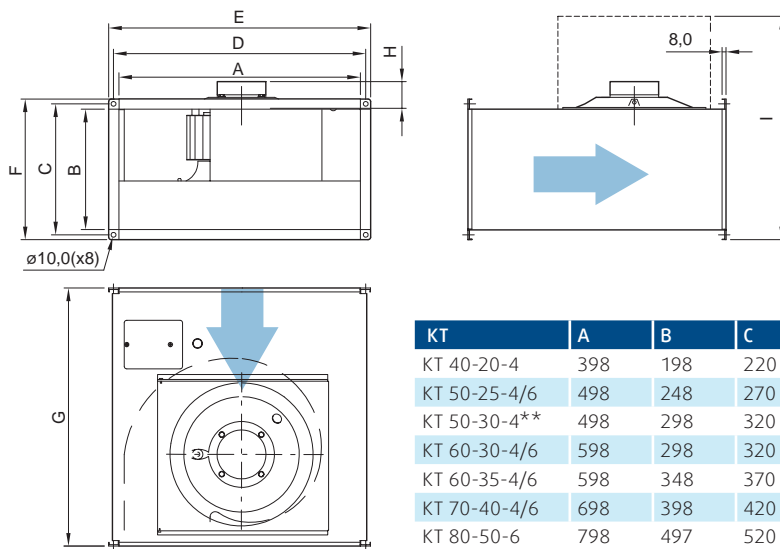


REV
On/off switch
Page 360

Quick selection



Dimensions



KT	A	B	C	D	E	F	G	H	I*
KT 40-20-4	398	198	220	420	440	240	502	32	530
KT 50-25-4/6	498	248	270	520	540	290	532	68	610
KT 50-30-4**	498	298	320	520	540	340	562	68	695
KT 60-30-4/6	598	298	320	620	640	340	642	89	715
KT 60-35-4/6	598	348	370	620	640	390	717	92	805
KT 70-40-4/6	698	398	420	720	740	440	787	92	900
KT 80-50-6	798	497	520	820	840	540	880	113	1090
KT 100-50-6**	998	497	520	1020	1040	540	980	113	1140

Technical data

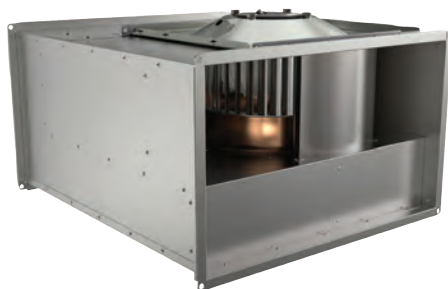
KT		KT 40-20-4	KT 50-25-4	KT 50-25-6	KT 50-30-4**	KT 60-30-4	KT 60-30-6
Art. no.		1482	1487	1485	93294	93097	1493
Voltage	V	3x400	3x400	3x400	3x400	3x400	3x400
Frequency	Hz	50	50	50	50	50	50
Input power (P1)	W	289	565	220	935	1619	97.9
Current	A	0.519	0.969	0.44	1.64	2.71	0.509
Max. temperature of transported air	°C	63.4	66.3	70	41.5	60.7	39.9
*when speed-controlled	°C	63.4	51.3	70	41.5	60.7	39.9
Sound pressure level (1 m)*	dB(A)	48	50.8	39.7	52.8	52.1	43.9
Sound pressure level (3 m)*	dB(A)	38.5	41.3	30.2	43.3	42.6	34.4
Weight	kg	12.5	17.4	16.5	21.1	30.6	24.3
Insulation class		B	F	F	F	F	F
Motor protection ⁽¹⁾		STDT 16	STDT 16	STDT 16	STDT 16	STDT 16	STDT 16
Speed control, five-step ⁽¹⁾	Transf.	RTRD 2	RTRD 2	RTRD 2	RTRD 2	RTRD 4	RTRD 2
Speed control, five-step high/low ⁽¹⁾	Transf.	RTRDU 2	RTRDU 2	RTRDU 2	RTRDU 2	RTRDU 4	RTRDU 2

KT		KT 60-35-4	KT 60-35-6	KT 70-40-4	KT 70-40-6	KT 80-50-6	KT 100-50-6**
Art. no.		93098	1497	1506	1504	1511	93293
Voltage	V	3x400	3x400	3x400	3x400	3x400	3x400
Frequency	Hz	50	50	50	50	50	50
Input power (P1)	W	2462	935	4186	1628	2799	4450
Current	A	4.01	1.84	7.15	3.02	5.12	7.82
Max. temperature of transported air	°C	64.5	44.3	48.5	60.8	70	43
* when speed-controlled	°C	64.5	44.3	48.5	60.8	70	43
Sound pressure level (1 m)*	dB(A)	56.1	48.4	62.4	52.8	55.4	58.1
Sound pressure level (3 m)*	dB(A)	46.6	38.9	52.9	43.3	45.9	48.6
Weight	kg	37.2	31.2	54.1	43.7	71	80
Insulation class		F	F	F	F	F	F
Motor protection ⁽¹⁾		STDT 16	STDT 16	STDT 16	STDT 16	STDT 16	STDT 16
Speed control, five-step ⁽¹⁾	Transf.	RTRD 7	RTRD 2	RTRD 2	RTRD 4	RTRD 7	RTRD 7
Speed control, five-step high/low ⁽¹⁾	Transf.	RTRDU 7	RTRDU 2	-	RTRDU 4	RTRDU 7	RTRDU 7

^(*) Free field conditions

^(**) Only for use outside the EEA (European Economic Area), see Ecodesign regulation 327/2011

⁽¹⁾ Systemair recommendation.



- Suitable for use in battery-charging rooms, fume cupboards and similar environments
- Maintenance-free and reliable
- Speed controllable
- Certified according to ATEX
- Explosion proof

Casing

The casing is manufactured from galvanised steel. The intake nozzle is made of copper.

Motor

Voltage controllable external rotor motors with pre-attached cable.

Impeller geometry

Centrifugal impeller with forward curved blades made from galvanised steel.

Output control

Speed controllable via a 5-stage transformer.

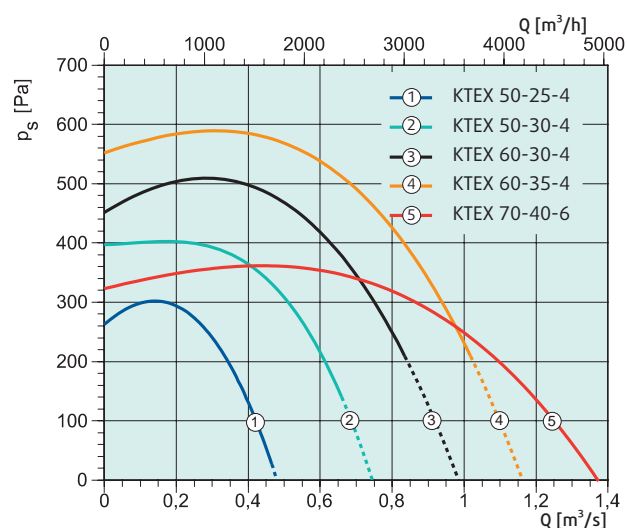
Motor protection

Motor protection via PTC thermistors, combined with a separately-connected motor protection device.

The fans can be used for temperature classes T1, T2 and T3 classification in accordance with ATEX 94/9/EC. Conveyance of potentially explosive gases in Zone 1 and Zone 2, Groups IIA and IIB as well as for applications with hydrogen is also possible.

You can find more information in our online catalogue on www.systemair.com

Quick selection



Accessories



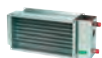
DS EX
Flex. connection
Page 409



FFK
Filter cassette
Page 377



LDR
Silencer
Page 376



VBR
Water heating battery
Page 382

Electrical accessories



Ex e
Terminal box
Page 361



R-DK4 KT
Transformer
Page 335



RTRD
Speed control
Page 335



U-EK230E
Motor protection
Page 350

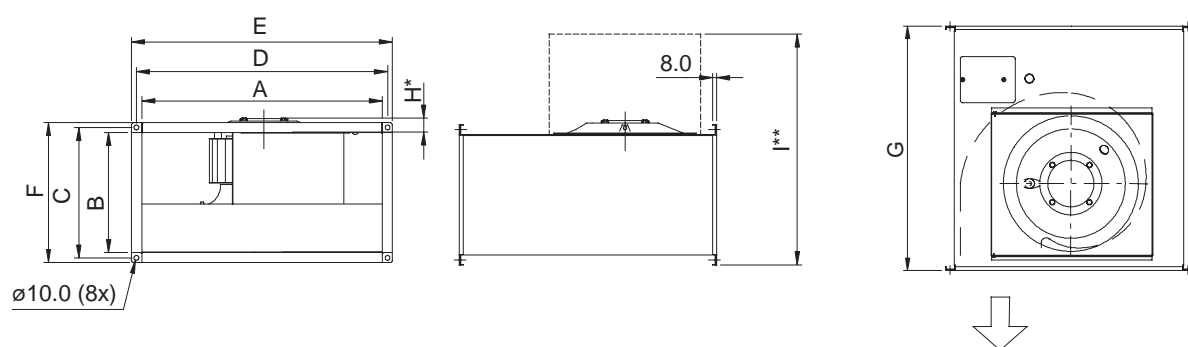


RTRDU
Speed control
Page 334



REV-ATEX
Switching device
Page 360

Dimensions



KTEX	A	B	C	D	E	F	G	H
KTEX 50-25-4	498	248	270	520	540	290	299	532
KTEX 50-30-4	498	298	320	520	540	340	351	562
KTEX 60-30-4	598	298	320	620	640	340	366	642
KTEX 60-35-4	598	348	370	620	640	390	421	717
KTEX 70-40-6	698	398	420	721	740	440	466	787

Technical data

KTEX		KTEX 50-25-4	KTEX 50-30-4	KTEX 60-30-4	KTEX 60-35-4	KTEX 70-40-6
Art. no.		19402	19404	19406	19960	19961
Voltage	V	3x400	3x400	3x400	3x400	3x400
Frequency	Hz	50	50	50	50	50
Input power (P1)	W	506	888	1246	1791	1533
Current	A	0.887	1.77	2.25	3.83	3.56
Temperature range, ambient and duct	°C	-20-40	-20-40	-20-40	-20-40	-20-40
Sound pressure level (1 m)*	dB(A)	46.2	53	52.6	56.9	52.8
Sound pressure level (3 m)*	dB(A)	36.7	43.5	43.1	57.4	43.3
Weight	kg	17.6	22.8	30.8	42	48.5
Insulation class		F	F	F	F	F
Motor protection		U-EK230E				
Certificate		Presafe 17ATEX9970X				
Explosion proof		Ex eb IIB+H2 T3 Gb				

(*) Free field conditions