

RS

Rectangular duct fans



- Swing-out motor impeller for easy service
- Speed-controllable
- Integral thermal contacts
- Can be installed in any position
- Maintenance-free and reliable

Casing

Casing manufactured from galvanised steel. Motors and impellers are mounted in the cover to make cleaning and maintenance easier.

Motor

Voltage controllable external rotor motors.

Impeller geometry

Centrifugal impeller with backward curved blades.

Output control

Speed-controllable via voltage reduction using a transformer or thyristor.

Motor protection

With integrated thermal contacts and cables for connection to a motor protection switching device.

You can find more information in our online catalogue on www.systemair.com

Accessories



DS
Flex. connection
Page 375



FFK
Filter cassette
Page 377



GFL
Counter flange
Page 375



LDR
Silencer
Page 376



SRK
Damper
Page 375



VK
Louvre shutter
Page 365



PGK
Duct cooler
Page 380



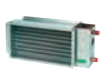
DXRE
Duct cooler
Page 381



RB
Duct heater
Page 378



RBM
Duct heater
Page 379



VBR
Water heating battery
Page 382

Electrical accessories



STD
Motor protection
Page 349



REPT
Digital regulator
Page 347



RTRD / RTRDU
Speed control
Page 335



RTRE / RTRD
Speed control
Page 332



REU
Speed control
Page 332

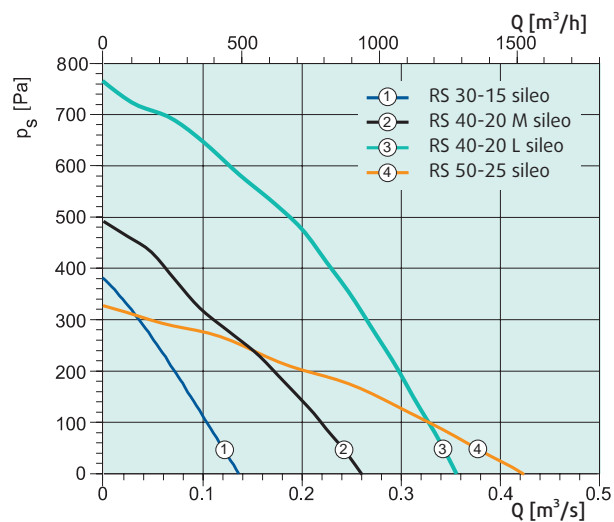


REE
Speed control
Page 333

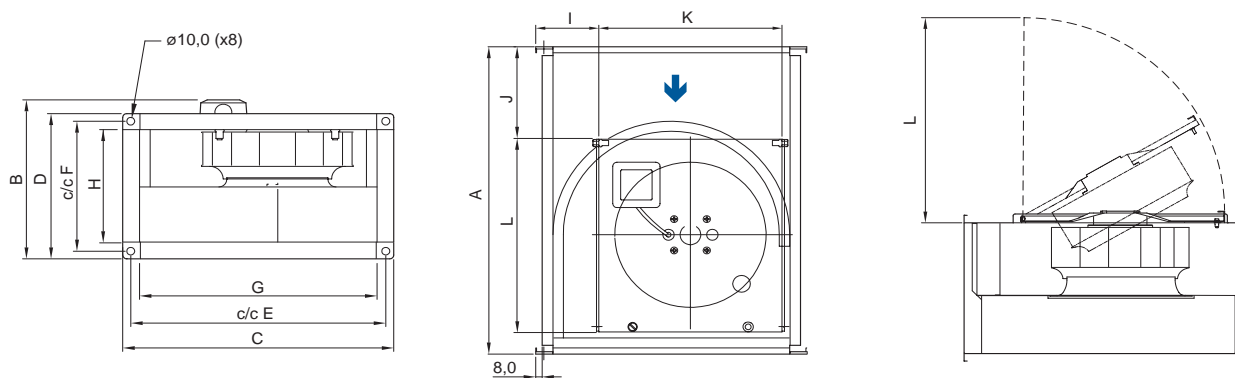


REV
On/off switch
Page 360

Quick selection



Dimensions



RS	A	B	C	D	E	F	G	H	I	J	K	L
RS 30-15 sileo	402	217	340	190	320	170	298	148	79	120	230	254
RS 40-20 M sileo	502	267	440	240	420	220	398	198	99	125	310	352
RS 40-20 L sileo	502	267	440	240	420	220	398	198	99	125	310.5	352.5
RS 50-25 sileo	532	317	540	290	520	270	498	248	125	85.5	366	423

Technical data

RS		RS 30-15 sileo	RS 40-20 M sileo	RS 40-20 L sileo	RS 50-25 sileo
Art. no.		77284	77285	27641	19531
Voltage	V	1x230	1x230	1x230	1x230
Frequency	Hz	50	50	50	50
Input power (P1)	W	51.4	107	228	129
Current	A	0.224	0.467	0.996	0.586
Max. temperature of transported air	°C	70	70	70	70
* when speed-controlled	°C	70	70	70	70
Sound pressure level (1 m)*	dB(A)	36.2	43.2	49.6	42.3
Sound pressure level (3 m)*	dB(A)	26.7	33.7	40.1	32.8
Weight	kg	6.2	10.7	12.6	15.3
Insulation class		B	B	F	B
Capacitor	µF	-	2.5	5	4
Motor protection ⁽¹⁾		-	-	-	-
Speed control, five-step ⁽¹⁾	Transf.	RE 1.5	RE 1.5	RE 1.5	RE 1.5
Speed control, five-step high/low ⁽¹⁾	Transf.	REU 1.5	REU 1.5	REU 1.5	REU 1.5
Speed control, stepless ⁽¹⁾	electr.	REE1	REE1	REE1	REE1

(*) Free field conditions

(1) Systemair recommendation.

RS

Rectangular duct fans



- Swing-out motor impeller for easy service
- Speed-controllable
- Integral thermal contacts
- Can be installed in any position
- Maintenance-free and reliable

Casing

Casing manufactured from galvanised steel. Motors and impellers are mounted in the cover to make cleaning and maintenance easier.

Motor

Voltage controllable external rotor motors.

Impeller geometry

Centrifugal impeller with backward curved blades.

Output control

Speed-controllable via voltage reduction using a transformer or thyristor.

Motor protection

With integrated thermal contacts and cables for connection to a motor protection switching device.

You can find more information in our online catalogue on www.systemair.com

Accessories



DS
Flex. connection
Page 375



FFK
Filter cassette
Page 377



GFL
Counter flange
Page 375



LDR
Silencer
Page 376



SRK
Damper
Page 375



VK
Louvre shutter
Page 365



PGK
Duct cooler
Page 380



DXRE
Duct cooler
Page 381



RB
Duct heater
Page 378



RBM
Duct heater
Page 379



VBR
Water heating battery
Page 382

Electrical accessories



STD
Motor protection
Page 349



REPT
Digital regulator
Page 347



RTRD / RTRDU
Speed control
Page 335



RTRE / RTRD
Speed control
Page 332



REU
Speed control
Page 332



REE
Speed control
Page 333

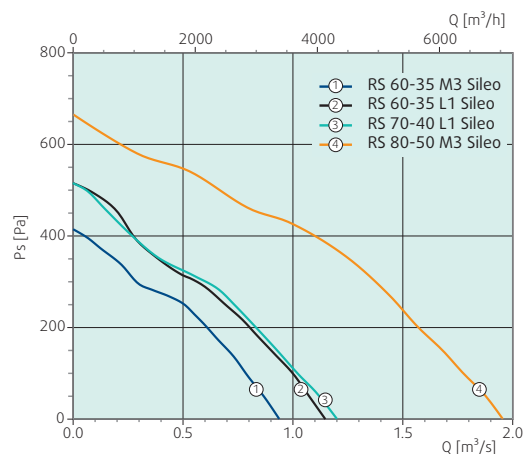
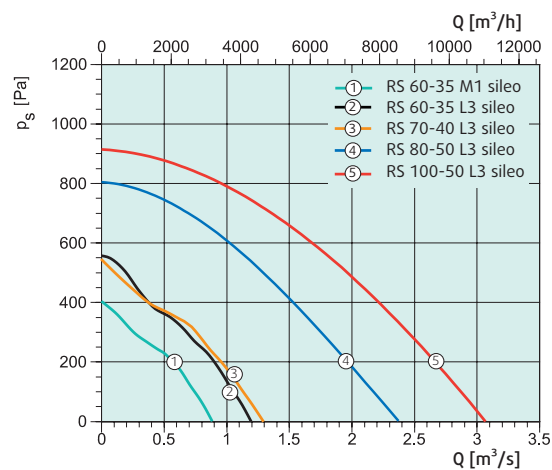


REV
On/off switch
Page 360



FRQ
Frequency inverter
Page 338

Quick selection

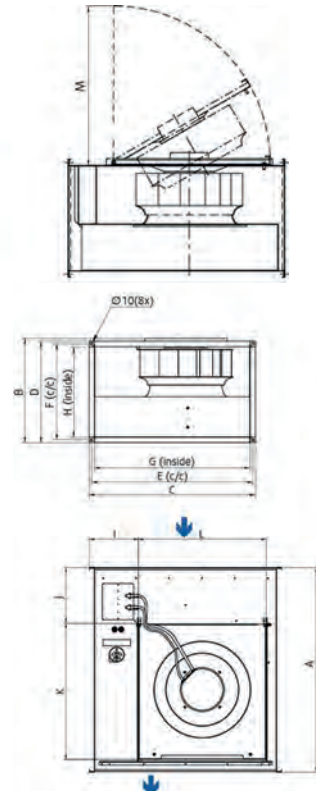
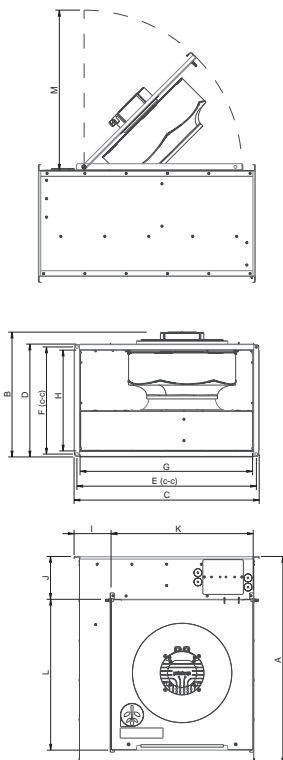
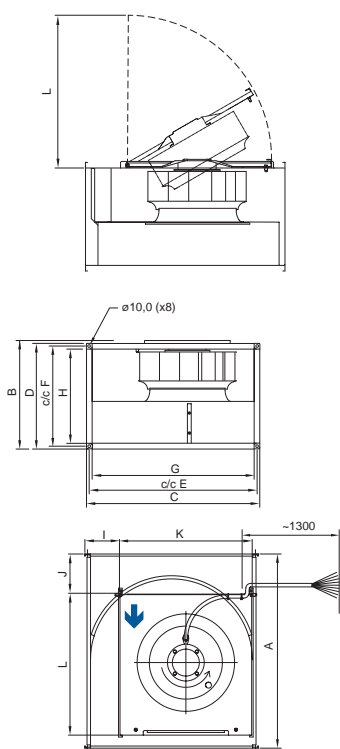


Dimensions

RS 60-35 M1, 60-35 L3, 70-40 L3,
80-50 L3, 100-50 L3

RS 60-35 L1, 60-35 M3

RS 70-40 L1, 80-50 M3



RS	A	B	C	D	E	F	G	H	I	J	K	L	M
RS 60-35 M1 sileo	717	402	640	390	620	370	598	348	128	145	490	524	-
RS 60-35 M3 sileo	717	431	640	390	620	370	598	348	109	147	491	521	530
RS 60-35 L1 sileo	717	431	640	390	620	370	598	348	109	147	491	521	530
RS 60-35 L3 sileo	717	402	640	390	620	370	598	348	128	145	490	524	-
RS 70-40 L1 sileo	787	465	740	440	720	420	698	398	189	215	524	491	518
RS 70-40 L3 sileo	787	452	740	440	720	420	698	398	189.5	215	490	524	-
RS 80-50 M3 sileo	882	560	840	541	820	520	798	498	182.5	190	614	644	650
RS 80-50 L3 sileo	882	573	840	541	820	520	798	498	182.5	190	614	644	-
RS 100-50 L3 sileo	982	583	1040	541	1020	520	998	498	298.5	290	614	644	-

Technical data

RS		RS 60-35 M1 sileo	RS 60-35 M3 sileo	RS 60-35 L1 sileo	RS 60-35 L3 sileo	RS 70-40 L1 sileo	RS 70-40 L3 sileo	RS 80-50 M3 sileo	RS 80-50 L3 sileo	RS 100-50 L3 sileo
Art. no.		39630	79383	79386	39631	79388	39632	39633	39634	39635
Voltage	V	1x230	3x400	1x230	3x400	1x230	3x400	3x400	3x400	3x400
Frequency	Hz	50	50	50	50	50	50	50	50	50
Input power (P1)	W	326	285	492	537	480	542	886	1379	2210
Current	A	1.71	0.64	2.25	1.25	2.21	1.32	1.82	3.16	4.27
Max. temperature of transported air	°C	70	70	70	70	70	70	70	70	70
* when speed-controlled	°C	70	70	70	70	70	70	70	70	70
Sound pressure level (1 m)*	dB(A)	53.7	48.5	54.5	54.7	50.1	53.5	57.3	62.9	60.2
Sound pressure level (3 m)*	dB(A)	44.2	39	45	45.2	40.6	44	47.8	53.4	50.7
Weight	kg	26.3	26.3	32	32	34.2	34.2	61.6	67.4	83
Insulation class		F	F	F	F	F	F	F	F	F
Capacitor	µF	-	-	4	-	12	-	-	-	-
Motor protection ⁽¹⁾		S-ET 10	STD 16	S-ET 10	STD 16	S-ET 10	STD 16	STD 16	STD 16	STD 16
Speed control, five-step ⁽¹⁾	Transf.	RTRE 3	RTRD 4	RTRE 3	RTRD 4	RTRE 3	RTRD 4	RTRD 4	RTRD 7	RTRD 14
Speed control, five-step high/low ⁽¹⁾	Transf.	REU 3 ⁽²⁾	RTRDU 4	REU 3 ⁽²⁾	RTRDU 4	REU 3 ⁽²⁾	RTRDU 4	RTRDU 4	RTRDU 7	-
Speed control, stepless ⁽¹⁾	electr.	REE 2 ⁽²⁾	-	REE 2 ⁽²⁾	-	REE 2 ⁽²⁾	-	-	-	-

^(*) Free field conditions

⁽¹⁾ Systemair recommendation.

⁽²⁾ + S-ET 10