



# MeiStream Plus

## Class C Bulkmeter for cold potable water DN 40...150 PN 16

### Main characteristics

- Meter with MID pattern approval acc. to annex MI001
- Exchangeable metrological unit with MID pattern approval acc. to annex MI001
- Unique measuring range;  $Q_3/Q_1 \geq 315$  in horizontal installation
- High overload capability
- No straight inlet length necessary (U0D0 acc. to OIML R49:2013 and ISO 4064-1:2017)
- Meter body in short (WP) and long (WS) overall length acc. to DIN 19625 and ISO 4064-1:2017 available
- Meter can be submerged; protection class IP68
- Used materials are temperature resistant up to 70 °C
- Register prepared for HRI-Mei pick-up
- Use of optical pulsers type OD is still possible

### APPLICATIONS

- Measurement for billing of cold potable water up to 50 °C
- Measurement of medium and high flowrates
- Measurement of low flow e. g. in light load periods
- For leakage control

### Materials

Body	Cast iron
Metrological module	Engineering polymer
Rotor	Engineering polymer
We also use the following materials	Brass Stainless steel

### Available options

- With encoder register for direct meter readout via data protocol (M-Bus, MiniBus, Sensus, IEC 1107)
- HRI-Mei factory mounted
- Version for use in hazardous area
- 1/4" pressure monitoring port

### Approval Mark

Meter cpl. and exchangeable metrological module

Marking CE M-XX\* 0102

DE-09-MI001-PTB 012

\* year of production

# MeiStream Plus

## Class C Bulkmeter for cold potable water DN 40...150 PN 16

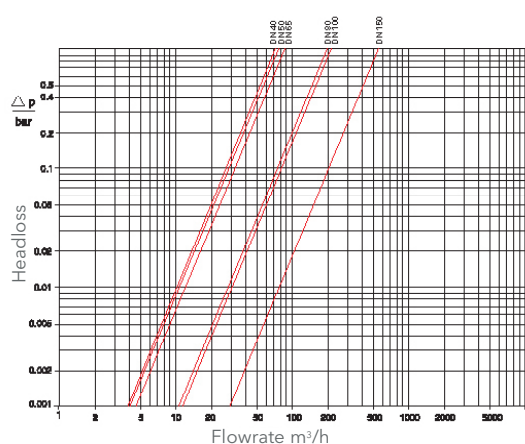
### Metrological Data acc. to Manufacturers Values

	Size	DN	40	50	65	80	100	150
$Q_5$	Max. Peak Flow	m <sup>3</sup> /h	50	55	60	120	160	400
$Q_3'$	Continuous Flow	m <sup>3</sup> /h	30	35	40	63	100	250
$Q_2$	Transitional Flowrate horizontal acc. to MID	m <sup>3</sup> /h	0.13	0.13	0.16	0.25	0.4	0.63
$Q_1'$	Minimum Flow horizontal	m <sup>3</sup> /h	0.08	0.07	0.1	0.13	0.2	0.35
	Starting Flow	m <sup>3</sup> /h	0.03	0.03	0.035	0.04	0.065	0.12

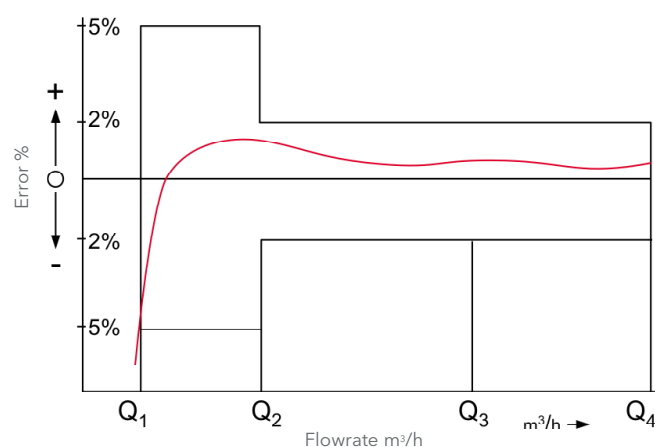
### Metrological Data acc. to 2014/32/EU (MID)

	Size	DN	40	50	65	80	100	150
$Q_4$	Overload Flowrate acc. to MID	m <sup>3</sup> /h	31.25	31.25	50	78.75	125	312.5
$Q_3$	Permanent Flowrate acc. to MID	m <sup>3</sup> /h	25	25	40	63	100	250
$Q_2$	Transitional Flowrate horizontal acc. to MID	m <sup>3</sup> /h	0.13	0.13	0.16	0.25	0.4	0.63
$Q_1$	Minimum Flowrate horizontal acc. to MID	m <sup>3</sup> /h	0.08	0.08	0.1	0.16	0.25	0.4
$Q_3/Q_1$	max. Ratio		315	315	400	400	400	630
$Q_3/Q_1$	Standard Marking		315	315	315	315	315	315
$\Delta p$	Headloss at $Q_3$ acc. to ISO 4064-1:2017	bar	0.09	0.08	0.17	0.07	0.16	0.14

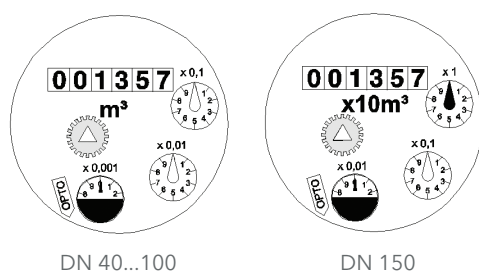
### Typical Headloss Curve



### Typical Error Curve





### Dial





Nominal diameter DN	Smallest reading m <sup>3</sup>	Max. reading m <sup>3</sup>
40 ... 100	0.0005	999,999.999
150	0.005	9,999,999.99

MeiStream Plus
Class C Bulkmeter for cold potable water DN 40...150 PN 16

Pulse Values

Pulser Type		Pulse Value DN 40 ... 100	Pulse Value DN 150
HRI-Mei (Leaflet see LS 8400)		0.01; 0.05; 0.1 or 1 m³	0.1; 0.5; 1 or 10 m³
OD 01 (Leaflet see LB 8300)		0.001 m³	0.01 m³
OD 03 (Leaflet see LB 8300)		0.01 m³	0.1 m³

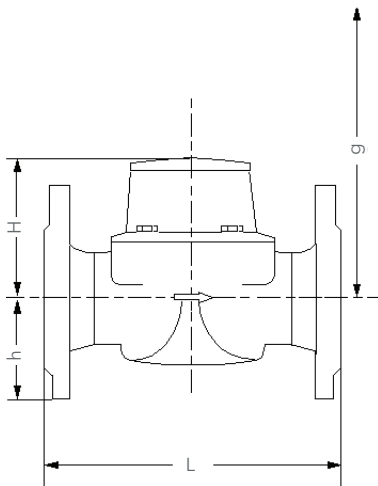
Installation

Pipe	horizontal	
Meter head	upwards	

Installation Requirements

- Unrestricted straight pipe upstream 0 x DN
- No abrupt restrictions directly downstream of the meter

Dimension Picture



Order Example

MeiStream Plus, DN 50, T50, PN16	Type Size Max. medium temperature Nominal pressure
Drilling EN 1092 PN16	Drilling pattern
Length 270 mm	Body length
mechanical register / m³	Register type / unit
with MID conformity	Approval standard

# MeiStream Plus

## Class C Bulkmeter for cold potable water DN 40...150 PN 16

### Dimensions and Weight

Dimensions	Nominal Diameter	DN	40	50	50	50	65	65	80	80	
	Overall length	L	mm	220	200	270	300	200	300	200	225
	Height	H	mm	120	120	120	120	120	120	150	150
	Height to pipe axis	h	mm	69	73	73	73	85	85	95	95
	Dismantling height	g	mm	200	200	200	200	200	200	270	270
Weight	Meter complete	kg	8.0	8.5	9.6	9.9	10.1	12.0	12.4	14.2	
	Metrological module	kg	1.5	1.5	1.5	1.5	1.5	1.5	3.2	3.2	
	Body	kg	6.5	7.0	8.1	8.4	8.6	10.5	9.2	11.0	

Dimensions	Nominal Diameter	DN	80	80	100	100	100	150	150	
	Overall length	L	mm	300	350	250	350	360	300	500
	Height	H	mm	150	150	150	150	150	177	177
	Height to pipe axis	h	mm	95	95	105	105	105	135	135
	Dismantling height	g	mm	270	270	270	270	270	356	356
Weight	Meter complete	kg	16.3	17.7	17.0	20.0	20.2	35.9	44.2	
	Metrological module	kg	3.2	3.2	3.2	3.2	3.2	5.9	5.9	
	Body	kg	13.1	14.5	13.8	16.8	17.0	30.0	38.3	



Certified according to ISO 9001 - Quality Management System Quality Austria Reg.no. 3496/0

**Sensus GmbH Hannover** | Meineckestr. 10 | 30880 Laatzen | +49 5102 74-0 | [info.int@xyleminc.com](mailto:info.int@xyleminc.com) | [sensus.com](https://sensus.com)

©2020 Sensus. All products purchased and services performed are subject to Sensus' terms of sale, available at [sensus.com](https://sensus.com). Sensus reserves the right to modify these terms and conditions in its own discretion. The Sensus logo and other Sensus products or services referenced are registered trademarks of Sensus.

This document is for informational purposes only, and SENSUS MAKES NO EXPRESS WARRANTIES IN THIS DOCUMENT. FURTHERMORE, THERE ARE NO IMPLIED WARRANTIES, INCLUDING WITHOUT LIMITATION, WARRANTIES AS TO FITNESS FOR A PARTICULAR PURPOSE AND MERCHANTABILITY. ANY USE OF THE PRODUCTS THAT IS NOT SPECIFICALLY PERMITTED HEREIN IS PROHIBITED.