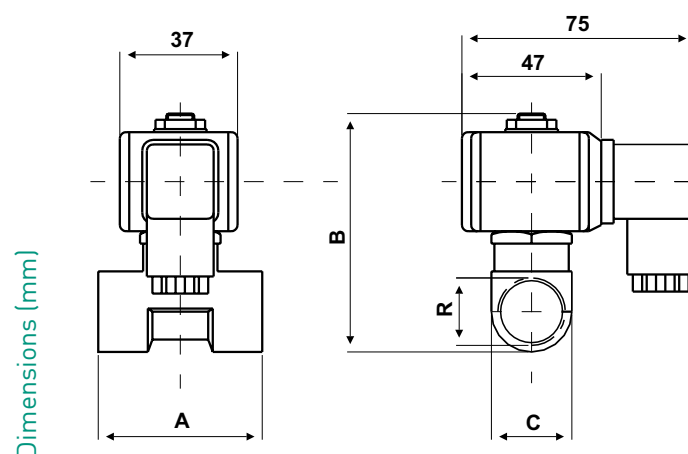


# M20

## Direct operation solenoid valve bodies, normally-closed

Solenoid valves suitable for water, air, fuel-oil, inert gases and other fluids non-corrosive for copper alloys, with viscosity up to 2° Engler.



type	A	B	C
M20B3	40	74	17
M20C5	53	78,5	26
M20D5	53	78,5	26
M20E7	60	94	52

N.B. Dimensions and weights are including the coils.

	Passage orifice diameter mm	Closing time msec	Female connection R	Kv m <sup>3</sup> /h	Maximum differential pressure Vn bar	0,85Vn bar	Testing pressure (DIN2401) PN bar
M20B3	3	10	G 1/4	0,27	16	10	25
M20C5	5	10	G 3/8	0,612	6	2	25
M20D5	5	10	G 1/2	0,612	6	2	25
M20E7	7	10	G 3/4	1	2,5	1,8	25

	Control coil			Connector	Passage orifice mm	Connection
	24V	110/115V	230V			
M20C5	IM21F	IM21H	IM21M	1578501	5	G 3/8
M20D5	IM21F	IM21H	IM21M	1578501	5	G 1/2
M21E7	IM21F	IM21H	IM21M	1578501	7	G 3/4
M20C51	IM22	-	-	1578501	5	G 3/8
M20D51	IM22	-	-	1578501	5	G 1/2
M20E71	IM22	-	-	1578501	7	G 3/4

Kv = water flow in m<sup>3</sup>/h with pressure drop of 1 bar (1 bar = 100kPa).

For IM21 bi-frequency coils used at 60 Hz, the values indicated are reduced by an average of 12%.

## INSTALLATION

Female threaded connection from G 1/4 to G 3/4.

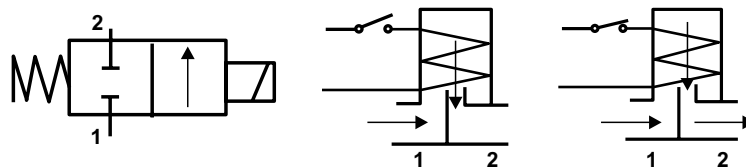
Quick connection connector for the coils.

## OPERATION

2-way execution, normally-closed.

Direct action operation.

When the coil is energized, the shutter opens instantly letting the fluid to pass as shown in the figure.



## FEATURES

Minimum operating limit -15%Vn.

Maximum operating limit +10%Vn.

Closing time 10 msec.

Brass-forged valve body.

Internal parts in stainless steel (17% CR).

Gaskets in VITON (fluoroelastomer).

Temperature of the controlled fluid: -10 ÷ 140°C.

Testing pressure PN (DIN 2401) 25 bar.

With coil in d.c. the indicated pressure should be reduced by 60%.

Unit weights:

■ M20B3 0,34 Kg

■ M20C5 0,40 Kg

■ M20D5 0,36 Kg

■ M20E7 0,70 Kg

### ELECTROMAGNETS

The control coils are supplied separately from valve bodies.

See page IM2, series tensions, technical specifications and the codes for ordering.

## ACCESSORIES



IM21D  
Control coil 12Vca 50/60Hz

IM21F  
Control coil 24Vca 50/60Hz

IM21H  
Control coil 110Vca 50/60Hz

IM21M  
Control coil 230Vca 50/60Hz

IM22  
Control coil 24Vcc  
(with coil in d.c. the indicated pressure  
should be reduced by 60%)

IM22A  
Control coil 12Vcc (not suitable for valve  
M20E7)  
(with coil in d.c. the indicated pressure  
should be reduced by 60%)



1578501  
Quick connection connector DIN 43650,  
suitable for all IM2 coils.  
Cable gland Pg9 (cable diameter 6÷8 mm).  
Adjustable cable outlet in 4 positions every 90°.